



Datasheet for ABIN561674  
**anti-ABLIM1 antibody (AA 637-736)**



[Go to Product page](#)

1 Image

Overview

Quantity:	50 µL
Target:	ABLIM1
Binding Specificity:	AA 637-736
Reactivity:	Human
Host:	Mouse
Clonality:	Polyclonal
Conjugate:	This ABLIM1 antibody is un-conjugated
Application:	Western Blotting (WB), ELISA

Product Details

Purpose:	Mouse polyclonal antibody raised against a partial recombinant ABLIM1.
Immunogen:	ABLIM1 (NP_002304, 637 a.a. ~ 736 a.a) partial recombinant protein with GST tag.
Sequence:	RYDSPINSAS HIPSSKTASL PGYGRNGLHR PVSTDFAQYN SYGDVSGGVR DYQTLPDGHM PAMRMDRGVS MPNMLEPKIF PYEMLMVTNR GRNKILREVD
Cross-Reactivity:	Human
Characteristics:	Antibody Reactive Against Recombinant Protein.

Target Details

Target:	ABLIM1
Alternative Name:	ABLIM1 ( <a href="#">ABLIM1 Products</a> )

## Target Details

Background:	Full Gene Name: actin binding LIM protein 1 Synonyms: ABLIM,DKFZp781D0148,FLJ14564,KIAA0059,LIMAB1,LIMATIN,MGC1224
Gene ID:	3983
NCBI Accession:	<a href="#">NM_002313</a>

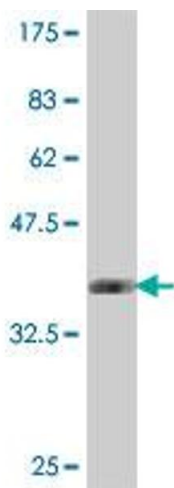
## Application Details

Application Notes:	Optimal working dilution should be determined by the investigator.
Restrictions:	For Research Use only

## Handling

Format:	Liquid
Buffer:	50 % glycerol
Handling Advice:	Aliquot to avoid repeated freezing and thawing.
Storage:	-20 °C
Storage Comment:	Store at -20°C or lower. Aliquot to avoid repeated freezing and thawing.

## Images



### Western Blotting

**Image 1.** Western Blot detection against Immunogen (37.11 kDa).