



Datasheet for ABIN561677
anti-Lipase A antibody (AA 1-399)



[Go to Product page](#)

4 Images

Overview

Quantity:	100 µg
Target:	Lipase A (LIPA)
Binding Specificity:	AA 1-399
Reactivity:	Human
Host:	Mouse
Clonality:	Monoclonal
Conjugate:	This Lipase A antibody is un-conjugated
Application:	Western Blotting (WB), ELISA, Immunoprecipitation (IP)

Product Details

Purpose:	Mouse monoclonal antibody raised against a full length recombinant LIPA.
Immunogen:	LIPA (AAH12287, 1 a.a. ~ 399 a.a) full-length recombinant protein with GST tag. MW of the GST tag alone is 26 KDa.
Sequence:	MKMRFLGLVV CLVLWPLHSE GSGGKLTALD PETNMNVSEI ISYWGFPSSE YLVETEDGYI LCLNRIPHGR KNHSDKGPKP VVFLQHGLLA DSSNWVTNLA NSSLGFILAD AGFDVWMGNS RGNTWSRKHK TLSVSQDEFW AFSYDEMAKY DLPASINFIL NKTGQEQVYY VGHSQGTIG FIAFSQIPEL AKRIKMFFAL GPVASVAFCT SPMAKLGRPL DHLIKDLFGD KEFLPQSAFL KWLGTHVCTH VILKELCGNL CFLLCGFNER NLNMSRVDVY TTHSPAGTSV QNMLHWSQAV KFQKFQAFDW GSSAKNYFHY NQSYPTYNV KDMLVPTAVW SGGHDWLADV YDVNILLTQI TNLVFHESIP EWEHLDFIWG LDAPWRLYNK IINLMRKYQ
Clone:	1F9

Product Details

Isotype:	IgG2b
Cross-Reactivity:	Human
Characteristics:	Antibody Reactive Against Recombinant Protein.

Target Details

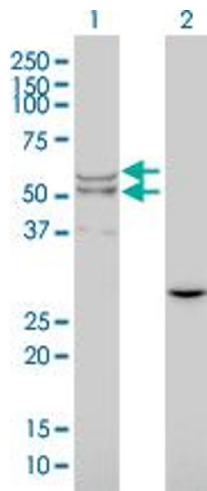
Target:	Lipase A (LIPA)
Alternative Name:	LIPA (LIPA Products)
Background:	Full Gene Name: lipase A, lysosomal acid, cholesterol esterase Synonyms: CESD,LAL
Gene ID:	3988

Application Details

Application Notes:	Optimal working dilution should be determined by the investigator.
Restrictions:	For Research Use only

Handling

Buffer:	In 1x PBS, pH 7.4
Handling Advice:	Aliquot to avoid repeated freezing and thawing.
Storage:	-20 °C
Storage Comment:	Store at -20°C or lower. Aliquot to avoid repeated freezing and thawing.

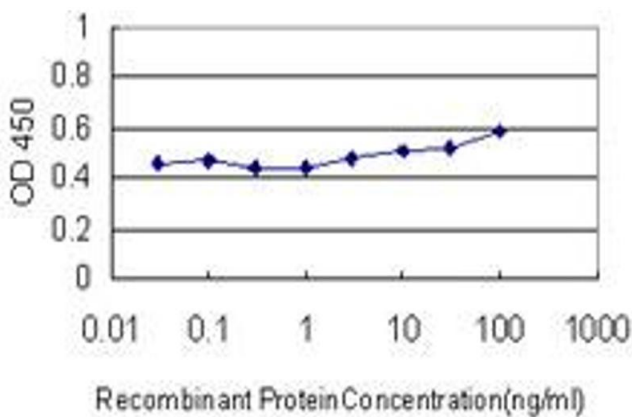


Western Blotting

Image 1. Western Blot analysis of LIPA expression in transfected 293T cell line by LIPA monoclonal antibody (M01), clone 1F9.

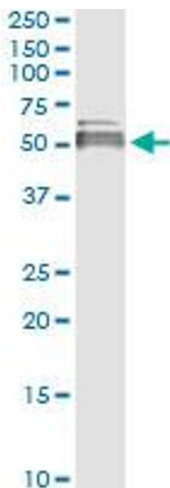
Lane 1: LIPA transfected lysate(45 kDa).

Lane 2: Non-transfected lysate.



ELISA

Image 2. Detection limit for recombinant GST tagged LIPA is approximately 10ng/ml as a capture antibody.



Western Blotting

Image 3. Immunoprecipitation of LIPA transfected lysate using anti-LIPA monoclonal antibody and Protein A Magnetic Bead, and immunoblotted with LIPA MaxPab rabbit polyclonal antibody.

Please check the [product details page](#) for more images. Overall 4 images are available for ABIN561677.