

Datasheet for ABIN561685
anti-LMO2 antibody (AA 1-158)



[Go to Product page](#)

3 Images

Overview

Quantity:	100 µg
Target:	LMO2
Binding Specificity:	AA 1-158
Reactivity:	Human
Host:	Mouse
Clonality:	Monoclonal
Conjugate:	This LMO2 antibody is un-conjugated
Application:	Western Blotting (WB), ELISA

Product Details

Purpose:	Mouse monoclonal antibody raised against a full length recombinant LMO2.
Immunogen:	LMO2 (AAH34041, 1 a.a. ~ 158 a.a) full-length recombinant protein with GST tag. MW of the GST tag alone is 26 KDa.
Sequence:	MSSAIERKSL DPSEEPVDEV LQIPPSLLTC GGCQQNIGDR YFLKAIDQYW HEDCLSCDLC GCRLGEVGR LYYKLGRKLC RRDYLRPFGQ DGLCASCDKR IRAYEMTMRV KDKVYHLECF KCAACQKHFC VGDRYLLINS DIVCEQDIYE WTKINGMI
Clone:	6B8
Isotype:	IgG1
Cross-Reactivity:	Human
Characteristics:	Antibody Reactive Against Recombinant Protein.

Target Details

Target:	LMO2
Alternative Name:	LMO2 (LMO2 Products)
Background:	Full Gene Name: LIM domain only 2 (rhombotin-like 1) Synonyms: RBTN2,RBTNL1,RHOM2,TTG2
Gene ID:	4005
Pathways:	Chromatin Binding

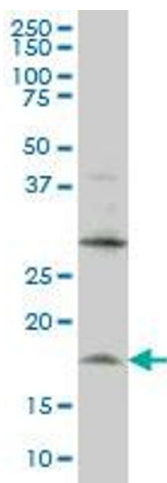
Application Details

Application Notes:	Optimal working dilution should be determined by the investigator.
Restrictions:	For Research Use only

Handling

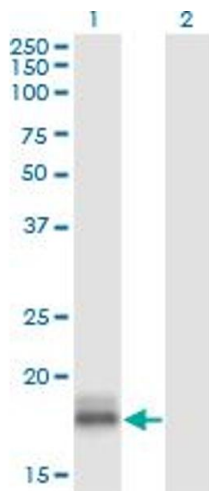
Buffer:	In 1x PBS, pH 7.4
Handling Advice:	Aliquot to avoid repeated freezing and thawing.
Storage:	-20 °C
Storage Comment:	Store at -20°C or lower. Aliquot to avoid repeated freezing and thawing.

Images



Western Blotting

Image 1. LMO2 monoclonal antibody (M01), clone 6B8
Western Blot analysis of LMO2 expression in HL-60 .

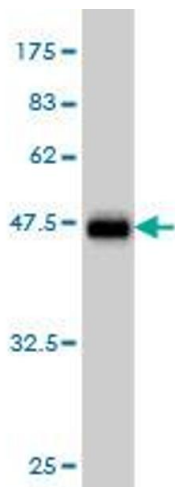


Western Blotting

Image 2. Western Blot analysis of LMO2 expression in transfected 293T cell line by LMO2 monoclonal antibody (M01), clone 6B8.

Lane 1: LMO2 transfected lysate(18.4 KDa).

Lane 2: Non-transfected lysate.



Western Blotting

Image 3. Western Blot detection against Immunogen (43.12 KDa).