



[Go to Product page](#)

Datasheet for ABIN561700  
**anti-LY6H antibody (AA 26-140)**

3 Images

1 Publication

### Overview

Quantity:	100 µg
Target:	LY6H
Binding Specificity:	AA 26-140
Reactivity:	Human
Host:	Mouse
Clonality:	Monoclonal
Conjugate:	This LY6H antibody is un-conjugated
Application:	ELISA, Western Blotting (WB), Immunohistochemistry (Paraffin-embedded Sections) (IHC (p))

### Product Details

Purpose:	Mouse monoclonal antibody raised against a full length recombinant LY6H.
Immunogen:	LY6H (AAH28894, 26 a.a. ~ 140 a.a) full-length recombinant protein with GST tag. MW of the GST tag alone is 26 KDa.
Sequence:	LWCQDCTLTT NSSHCTPKQC QPSDTV CASV RITDPSSSRK DHSVNKMCAS SCDFVKRHFF SDYLMGFINS GILKVDVDC EKDLCNGAAG AGHSPWALAG GLLLSLGPAL LWAGP
Clone:	3E10
Isotype:	IgG1
Cross-Reactivity:	Human
Characteristics:	Antibody Reactive Against Recombinant Protein.

## Target Details

Target:	LY6H
Alternative Name:	LY6H ( <a href="#">LY6H Products</a> )
Background:	Full Gene Name: lymphocyte antigen 6 complex, locus H Synonyms: NMLY6
Gene ID:	4062

## Application Details

Application Notes:	Optimal working dilution should be determined by the investigator.
Restrictions:	For Research Use only

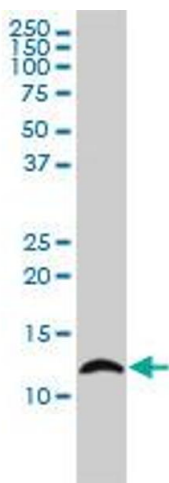
## Handling

Buffer:	In 1x PBS, pH 7.4
Handling Advice:	Aliquot to avoid repeated freezing and thawing.
Storage:	-20 °C
Storage Comment:	Store at -20°C or lower. Aliquot to avoid repeated freezing and thawing.

## Publications

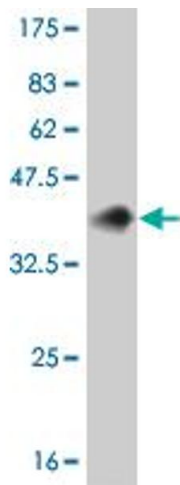
Product cited in:	Kalinowska, Castillo, Francesconi: "Quantitative profiling of brain lipid raft proteome in a mouse model of fragile X syndrome." in: <b>PLoS ONE</b> , Vol. 10, Issue 4, pp. e0121464, (2015) ( <a href="#">PubMed</a> ).
-------------------	---

## Images



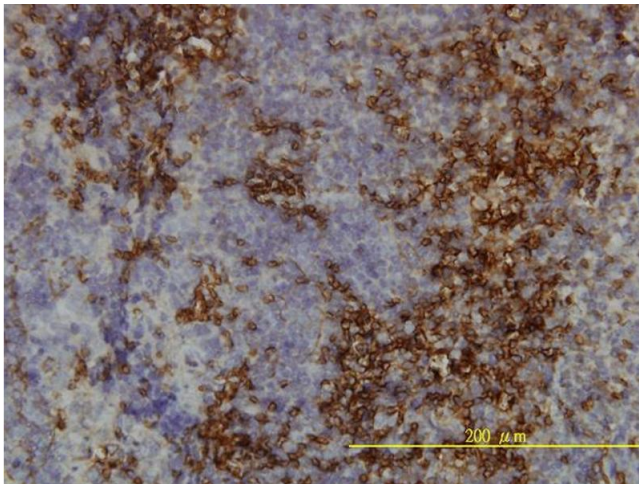
### Western Blotting

**Image 1.** LY6H monoclonal antibody (M01), clone 3E10  
Western Blot analysis of LY6H expression in K-562 .



### Western Blotting

**Image 2.** Western Blot detection against Immunogen (38.39 kDa).



### Immunostaining

**Image 3.** Immunoperoxidase of monoclonal antibody to LY6H on formalin-fixed paraffin-embedded human tonsil tissue. [antibody concentration 2 ug/ml]