



[Go to Product page](#)

Datasheet for ABIN561706  
**anti-MAB21L1 antibody (AA 250-358)**

1 Image

Overview

Quantity:	50 µL
Target:	MAB21L1
Binding Specificity:	AA 250-358
Reactivity:	Human
Host:	Mouse
Clonality:	Polyclonal
Conjugate:	This MAB21L1 antibody is un-conjugated
Application:	ELISA, Western Blotting (WB)

Product Details

Purpose:	Mouse polyclonal antibody raised against a partial recombinant MAB21L1.
Immunogen:	MAB21L1 (NP_005575, 250 a.a. ~ 358 a.a) partial recombinant protein with GST tag.
Sequence:	CLSILKTLRD RHLELPGQPL NNYHMKTLVS YECEKHPRES DWDESCLGDR LNGILLQLIS CLQCRRCPHY FLPNLDLFQG KPHSALENAA KQTWRLAREI LTNPKSLEK
Cross-Reactivity:	Human
Characteristics:	Antibody Reactive Against Recombinant Protein.

Target Details

Target:	MAB21L1
Alternative Name:	MAB21L1 ( <a href="#">MAB21L1 Products</a> )

## Target Details

Background: Full Gene Name: mab-21-like 1 (C. elegans)  
Synonyms: CAGR1,FLJ10197,Nbla00126

Gene ID: 4081

NCBI Accession: [NM\\_005584](#)

## Application Details

Application Notes: Optimal working dilution should be determined by the investigator.

Restrictions: For Research Use only

## Handling

Format: Liquid

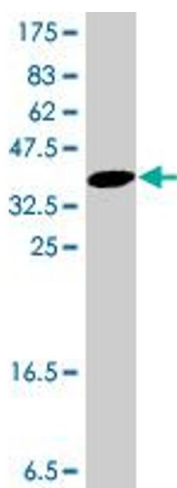
Buffer: 50 % glycerol

Handling Advice: Aliquot to avoid repeated freezing and thawing.

Storage: -20 °C

Storage Comment: Store at -20°C or lower. Aliquot to avoid repeated freezing and thawing.

## Images



### Western Blotting

**Image 1.** Western Blot detection against Immunogen (38.1 KDa) .