



[Go to Product page](#)

Datasheet for ABIN561710

anti-MAD2L1 antibody (AA 1-205)

4 Images

1 Publication

Overview

Quantity:	100 µg
Target:	MAD2L1
Binding Specificity:	AA 1-205
Reactivity:	Human
Host:	Mouse
Clonality:	Monoclonal
Conjugate:	This MAD2L1 antibody is un-conjugated
Application:	Western Blotting (WB), ELISA

Product Details

Purpose:	Mouse monoclonal antibody raised against a full length recombinant MAD2L1.
Immunogen:	MAD2L1 (AAH00356, 1 a.a. ~ 205 a.a) full-length recombinant protein with GST tag. MW of the GST tag alone is 26 KDa.
Sequence:	MALQLSREQG ITLRGS AEIV AEFFSFGINS ILYQRGIYPS ETFTRVQKYG LTLVTTDLE LIKYLNNWVE QLKDWLYKCS VQKLVVVISN IESGEVLERW QFDIECDKTA KDDSAPREKS QKAIQDEIRS VIRQITATVT FLPLLEVSCS FDLIIYTDKD LVVPEKWEES GPQFITNSEE VRLRSFTTTI HKVNSMVAYK IPVND
Clone:	2E2-1D6
Isotype:	IgG2b kappa
Cross-Reactivity:	Human

Target Details

Target:	MAD2L1
Alternative Name:	MAD2L1 (MAD2L1 Products)
Background:	Full Gene Name: MAD2 mitotic arrest deficient-like 1 (yeast) Synonyms: HSMAD2,MAD2
Gene ID:	4085

Application Details

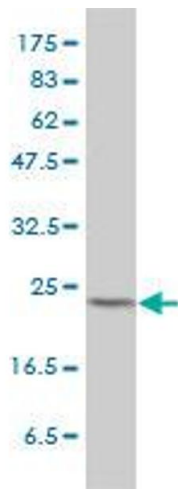
Application Notes:	Optimal working dilution should be determined by the investigator.
Comment:	Product Quality tested by: Antibody Reactive Against Recombinant Protein.
Restrictions:	For Research Use only

Handling

Buffer:	In 1x PBS, pH 7.4
Handling Advice:	Aliquot to avoid repeated freezing and thawing.
Storage:	-20 °C
Storage Comment:	Store at -20°C or lower. Aliquot to avoid repeated freezing and thawing.

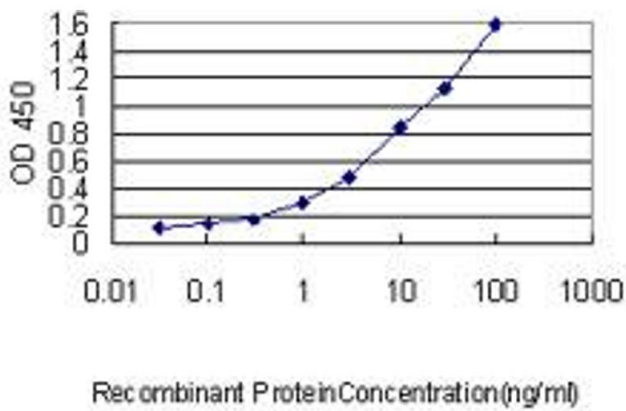
Publications

Product cited in:	<p>Bronckers, Guo, Zandieh-Doulabi, Bervoets, Lyaruu, Li, Wangemann, DenBesten: "Developmental expression of solute carrier family 26A member 4 (SLC26A4/pendrin) during amelogenesis in developing rodent teeth." in: European journal of oral sciences, Vol. 119 Suppl 1, pp. 185-92, (2012) (PubMed).</p> <p>Garnett, Hickman, Burrows, Hegyi, Tizslavicz, Cuthbert, Fong, Gray: "Novel role for pendrin in orchestrating bicarbonate secretion in cystic fibrosis transmembrane conductance regulator (CFTR)-expressing airway serous cells." in: The Journal of biological chemistry, Vol. 286, Issue 47, pp. 41069-82, (2011) (PubMed).</p>
-------------------	---



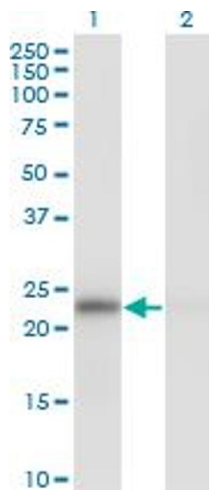
Western Blotting

Image 1. MAD2L1 monoclonal antibody (M01), clone 2E2-1D6 Western Blot analysis of MAD2L1 expression in HeLa .



ELISA

Image 2. Detection limit for recombinant GST tagged MAD2L1 is approximately 0.03ng/ml as a capture antibody.



Western Blotting

Image 3. Western Blot analysis of MAD2L1 expression in transfected 293T cell line by MAD2L1 monoclonal antibody (M01), clone 2E2-1D6.

Lane 1: MAD2L1 transfected lysate(23.5 KDa).

Lane 2: Non-transfected lysate.

Please check the [product details page](#) for more images. Overall 4 images are available for ABIN561710.