

Datasheet for ABIN561716  
**anti-SMAD3 antibody (AA 1-110)**



[Go to Product page](#)

4 Images

## Overview

Quantity:	100 µg
Target:	SMAD3
Binding Specificity:	AA 1-110
Reactivity:	Human
Host:	Mouse
Clonality:	Monoclonal
Conjugate:	This SMAD3 antibody is un-conjugated
Application:	ELISA, Immunofluorescence (IF), Proximity Ligation Assay (PLA)

## Product Details

Purpose:	Mouse monoclonal antibody raised against a partial recombinant SMAD3.
Immunogen:	SMAD3 (NP_005893, 1 a.a. ~ 110 a.a) partial recombinant protein with GST tag. MW of the GST tag alone is 26 KDa.
Sequence:	MSSILPFTPP IVKRLLGWKK GEQNGQEEKW CEKAVKSLVK KKKKTGQLDE LEKAITQNV NTKCITIPRS LDGRLQVSHR KGLPHVIYCR LWRWPDLSH HELRAMELCE
Clone:	4G12
Isotype:	IgG2a
Cross-Reactivity:	Human
Characteristics:	Antibody Reactive Against Recombinant Protein.

## Target Details

Target: SMAD3

Alternative Name: SMAD3 ([SMAD3 Products](#))

Background: Full Gene Name: SMAD family member 3  
Synonyms: DKFZp586N0721,DKFZp686J10186,HSPC193,HsT17436,JV15-2,MADH3,MGC60396

Gene ID: 4088

NCBI Accession: [NM\\_005902](#)

Pathways: [Cell Division Cycle](#), [Chromatin Binding](#), [Cell-Cell Junction Organization](#), [Positive Regulation of Endopeptidase Activity](#), [Autophagy](#)

## Application Details

Application Notes: Optimal working dilution should be determined by the investigator.

Restrictions: For Research Use only

## Handling

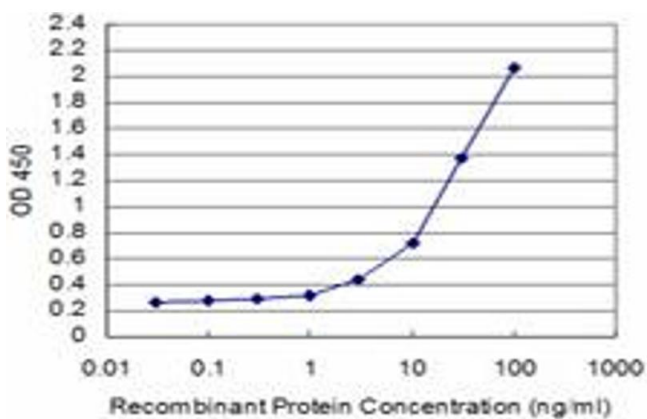
Buffer: In 1x PBS, pH 7.4

Handling Advice: Aliquot to avoid repeated freezing and thawing.

Storage: -20 °C

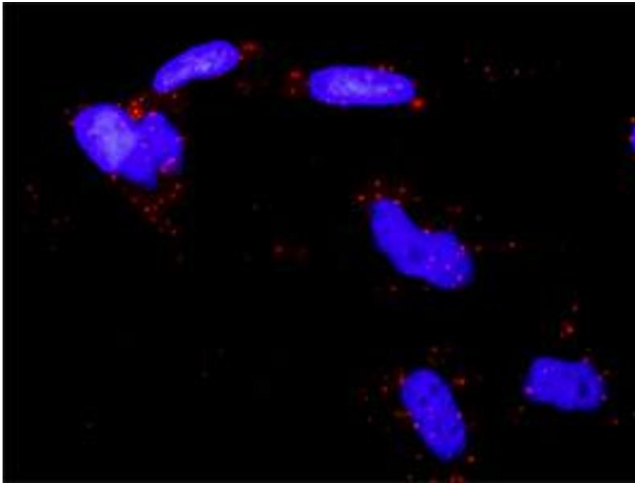
Storage Comment: Store at -20°C or lower. Aliquot to avoid repeated freezing and thawing.

## Images



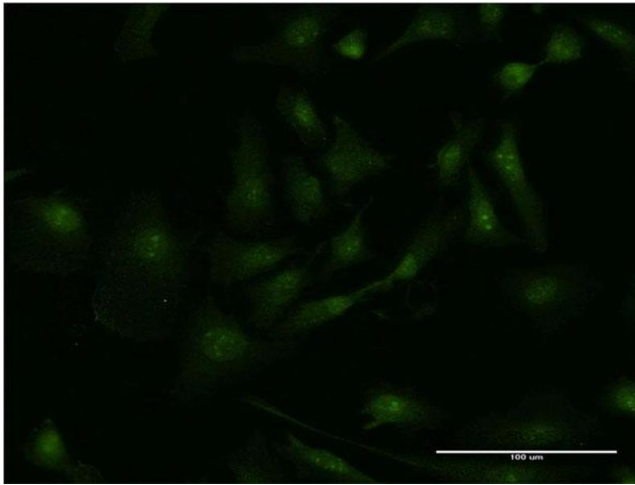
### ELISA

**Image 1.** Detection limit for recombinant GST tagged SMAD3 is approximately 1ng/ml as a capture antibody.



### Proximity Ligation Assay

**Image 2.** Proximity Ligation Analysis of protein-protein interactions between EPAS1 and SMAD3. HeLa cells were stained with anti-EPAS1 rabbit purified polyclonal 1:1200 and anti-SMAD3 mouse monoclonal antibody 1:50. Each red dot represents the detection of protein-protein interaction complex, and nuclei were counterstained with DAPI (blue).



### Immunofluorescence

**Image 3.** Immunofluorescence of monoclonal antibody to SMAD3 on HeLa cell. [antibody concentration 10 ug/ml]

Please check the [product details page](#) for more images. Overall 4 images are available for ABIN561716.