

Datasheet for ABIN561796
anti-MAP3K1 antibody (AA 1211-1310)

3 Images

[Go to Product page](#)

Overview

Quantity:	100 µg
Target:	MAP3K1
Binding Specificity:	AA 1211-1310
Reactivity:	Human
Host:	Mouse
Clonality:	Monoclonal
Conjugate:	This MAP3K1 antibody is un-conjugated
Application:	Western Blotting (WB), ELISA, Proximity Ligation Assay (PLA)

Product Details

Purpose:	Mouse monoclonal antibody raised against a partial recombinant MAP3K1.
Immunogen:	MAP3K1 (XP_042066, 1211 a.a. ~ 1310 a.a) partial recombinant protein with GST tag. MW of the GST tag alone is 26 KDa.
Sequence:	SKNSMTLDLN SSSKCDDSGF CSSNSSNAVI PSDETVFTPV EEKCRLDVNT ELNSSIEDLL EASMPSSDTT VTFKSEVAVL SPEKAENDDT YKDDVNHNQK
Clone:	2F6
Isotype:	IgG2a
Cross-Reactivity:	Human
Characteristics:	Antibody Reactive Against Recombinant Protein.

Target Details

Target:	MAP3K1
Alternative Name:	MAP3K1 (MAP3K1 Products)
Background:	Full Gene Name: mitogen-activated protein kinase kinase kinase 1 Synonyms: MAPKKK1,MEKK,MEKK1
Gene ID:	4214
NCBI Accession:	XM_042066
Pathways:	MAPK Signaling , Interferon-gamma Pathway , Caspase Cascade in Apoptosis , TLR Signaling , Fc-epsilon Receptor Signaling Pathway , Activation of Innate immune Response , Regulation of Actin Filament Polymerization , Toll-Like Receptors Cascades

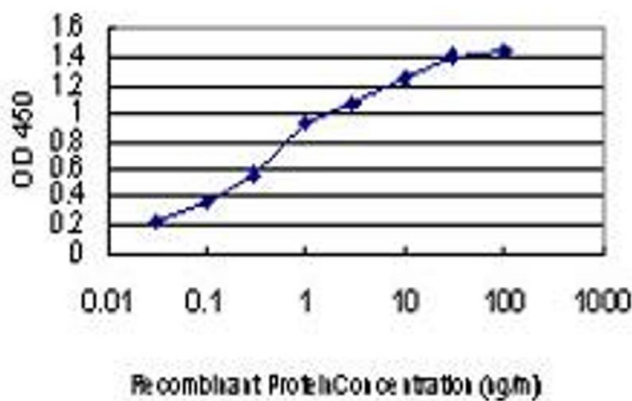
Application Details

Application Notes:	Optimal working dilution should be determined by the investigator.
Restrictions:	For Research Use only

Handling

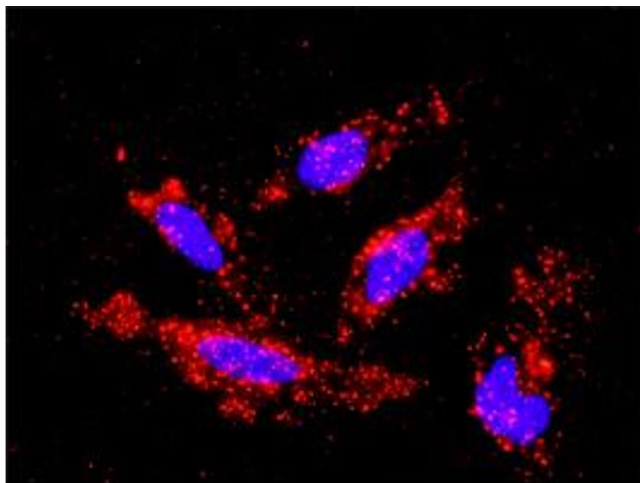
Buffer:	In 1x PBS, pH 7.4
Handling Advice:	Aliquot to avoid repeated freezing and thawing.
Storage:	-20 °C
Storage Comment:	Store at -20°C or lower. Aliquot to avoid repeated freezing and thawing.

Images



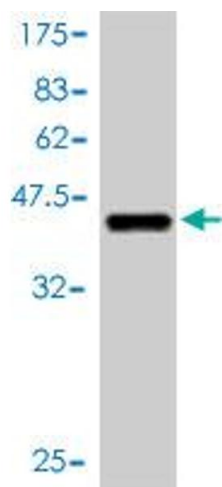
ELISA

Image 1. Detection limit for recombinant GST tagged MAP3K1 is approximately 0.03ng/ml as a capture antibody.



Proximity Ligation Assay

Image 2. Proximity Ligation Analysis of protein-protein interactions between MAPK3 and MAP3K1. HeLa cells were stained with anti-MAPK3 rabbit purified polyclonal 1:1200 and anti-MAP3K1 mouse monoclonal antibody 1:50. Each red dot represents the detection of protein-protein interaction complex, and nuclei were counterstained with DAPI (blue).



Western Blotting

Image 3. Western Blot detection against Immunogen (36.63 kDa) .