



[Go to Product page](#)

Datasheet for ABIN561822
anti-MID1 antibody (AA 441-540)

1 Image

Overview

Quantity:	50 µL
Target:	MID1
Binding Specificity:	AA 441-540
Reactivity:	Human
Host:	Mouse
Clonality:	Polyclonal
Conjugate:	This MID1 antibody is un-conjugated
Application:	Western Blotting (WB), ELISA

Product Details

Purpose:	Mouse polyclonal antibody raised against a partial recombinant MID1.
Immunogen:	MID1 (AAH53626, 441 a.a. ~ 540 a.a) partial recombinant protein with GST tag.
Sequence:	PNIKQNHYYTV HGLQSGTKYI FMVKAINQAG SRSSEPGKLK TNSQPFKLDLP KSAHRKLVKVS HDNLTVERDE SSSKKSHTPE RFTSQGSYGV AGNVFIDSGR
Cross-Reactivity:	Human
Characteristics:	Antibody Reactive Against Recombinant Protein.

Target Details

Target:	MID1
Alternative Name:	MID1 (MID1 Products)

Target Details

Background:	Full Gene Name: midline 1 (Opitz/BBB syndrome) Synonyms: BBBG1,FX,Y,GBBB1,MIDIN,OGS1,OS,OSX,RNF59,TRIM18,XPRF,ZNFXY
Gene ID:	4281

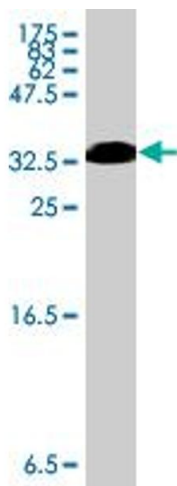
Application Details

Application Notes:	Optimal working dilution should be determined by the investigator.
Restrictions:	For Research Use only

Handling

Format:	Liquid
Buffer:	50 % glycerol
Handling Advice:	Aliquot to avoid repeated freezing and thawing.
Storage:	-20 °C
Storage Comment:	Store at -20°C or lower. Aliquot to avoid repeated freezing and thawing.

Images



Western Blotting

Image 1. Western Blot detection against Immunogen (37 kDa).