



[Go to Product page](#)

Datasheet for ABIN561825
anti-MKLN1 antibody (AA 633-735)

1 Image

Overview

Quantity:	50 µL
Target:	MKLN1
Binding Specificity:	AA 633-735
Reactivity:	Human
Host:	Mouse
Clonality:	Polyclonal
Conjugate:	This MKLN1 antibody is un-conjugated
Application:	Western Blotting (WB), ELISA

Product Details

Purpose:	Mouse polyclonal antibody raised against a partial recombinant MKLN1.
Immunogen:	MKLN1 (NP_037387, 633 a.a. ~ 735 a.a) partial recombinant protein with GST tag.
Sequence:	RHCKYLIRKH RFEEKAQVDP LSALKYLQND LYITVDHSDP EETKEFQLLA SALFKSGSDF TALGFSDVDH TYAQRQLFD TLVNFPPDSM TPPKGNLVDL ITL
Cross-Reactivity:	Human
Characteristics:	Antibody Reactive Against Recombinant Protein.

Target Details

Target:	MKLN1
Alternative Name:	MKLN1 (MKLN1 Products)

Target Details

Background:	Full Gene Name: muskelin 1, intracellular mediator containing kelch motifs Synonyms: FLJ11162,TWA2
Gene ID:	4289
NCBI Accession:	NM_013255

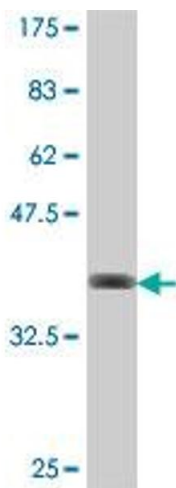
Application Details

Application Notes:	Optimal working dilution should be determined by the investigator.
Restrictions:	For Research Use only

Handling

Format:	Liquid
Buffer:	50 % glycerol
Handling Advice:	Aliquot to avoid repeated freezing and thawing.
Storage:	-20 °C
Storage Comment:	Store at -20°C or lower. Aliquot to avoid repeated freezing and thawing.

Images



Western Blotting

Image 1. Western Blot detection against Immunogen (37.44 KDa) .