

Datasheet for ABIN561826
anti-MLH1 antibody (AA 1-756)



[Go to Product page](#)

7 Images

Overview

Quantity:	100 µg
Target:	MLH1
Binding Specificity:	AA 1-756
Reactivity:	Human
Host:	Mouse
Clonality:	Monoclonal
Conjugate:	This MLH1 antibody is un-conjugated
Application:	Western Blotting (WB), ELISA, Immunofluorescence (IF), Immunohistochemistry (Paraffin-embedded Sections) (IHC (p)), Proximity Ligation Assay (PLA)

Product Details

Purpose:	Mouse monoclonal antibody raised against a full length recombinant MLH1.
Immunogen:	MLH1 (AAH06850, 1 a.a. ~ 756 a.a) full-length recombinant protein with GST tag. MW of the GST tag alone is 26 KDa.
Sequence:	MSFVAGVIRR LDETVDNRIA AGEVIQR PAN AIKEMIENCL DAKSTSIQVI VKEGGLKLIQ IQDNGTGIRK EDLDIVCERF TTSKLSQSFED LASISTYGFR GEALASISHV AHVTITTKTA DGKCA YRASY SDGK LKAPPK PCAGNQGTQI TVEDLFYNIA TRRKALKNPS EEYGKILEVV GRYSVHNAGI SFSVKKQGET VADVRTL PNA STVDNIRSIF GNAVSRELIE IGCEDKT LAF KMNGYISNAN YSVK KCIFLL FINHRLVEST SLRKAIETVY AAYLPKNTHP FLYLSLEISP QNV D VNVHPT KHEVHFLHEE SILERVQ QHI ESKLLGSNSS RMYFTQTLLP GLAGPSGEMV KSTTSLTSSS TSGSSDKVYA HQMVRTDSRE QKLDAFLQPL SKPLSSQPQA IVTEDKTDIS SGRARQQDEE MLELPAPAEV AAKNQSLEGD TTKGTSEMSE KRGPTSSNPR KRHREDS DVE

Product Details

MVEDDSRKEM TAACTPRRRI INLTSVLSLQ EEINEQGHEV LREMLHNHSF VGCVNPQWAL
AQHQTKLYLL NTTKLSEELF YQILIYDFAN FGVRLRSEPA PLFDLAMLAL DSPESGWTEE
DGPKEGLAEY IVEFLKKAKE MLADYFSLEI DEEGLNIGLP LLIDNYVPPL EGLPIFILRL
ATEVNWDEEK ECFESLSKEC AMFYSIRKQY ISEESTLSGQ QSEVPGSIPN SWKWTVEHIV
YKALRSHILP PKHFTEDGNI LQLANLPDLY KVFERC

Clone:	M1
Isotype:	IgG2a
Cross-Reactivity:	Human
Characteristics:	Antibody Reactive Against Recombinant Protein.

Target Details

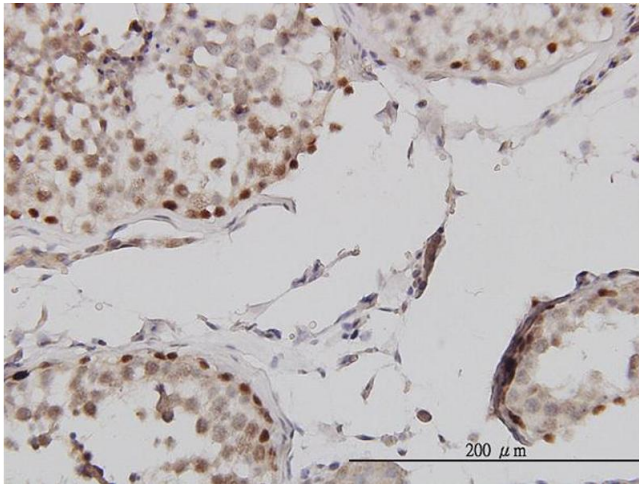
Target:	MLH1
Alternative Name:	MLH1 (MLH1 Products)
Background:	Full Gene Name: mutL homolog 1, colon cancer, nonpolyposis type 2 (E. coli) Synonyms: COCA2,FCC2,HNPCC,HNPCC2,MGC5172,hMLH1
Gene ID:	4292
Pathways:	DNA Damage Repair , Production of Molecular Mediator of Immune Response

Application Details

Application Notes:	Optimal working dilution should be determined by the investigator.
Restrictions:	For Research Use only

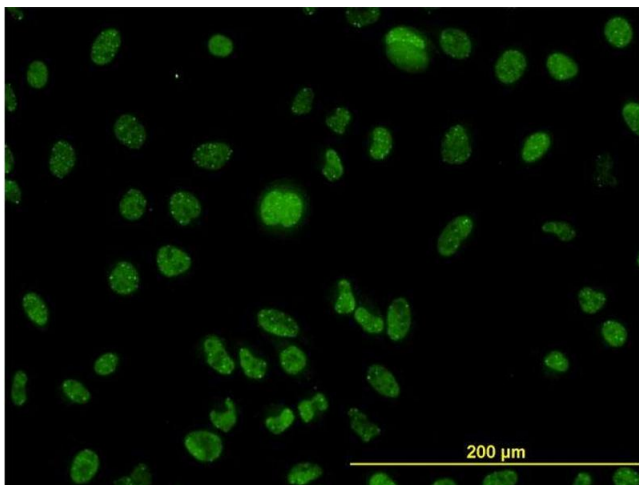
Handling

Buffer:	In 1x PBS, pH 7.4
Handling Advice:	Aliquot to avoid repeated freezing and thawing.
Storage:	-20 °C
Storage Comment:	Store at -20°C or lower. Aliquot to avoid repeated freezing and thawing.



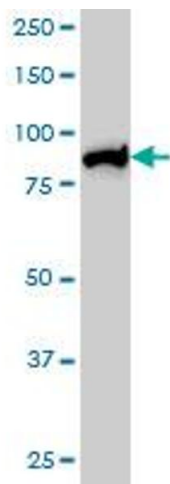
Immunostaining

Image 1. Immunoperoxidase of monoclonal antibody to MLH1 on formalin-fixed paraffin-embedded human testis. [antibody concentration 1 ug/ml]



Immunofluorescence

Image 2. Immunofluorescence of monoclonal antibody to MLH1 on HeLa cell. [antibody concentration 10 ug/ml]



Viral Entry Inhibition

Image 3. MLH1 monoclonal antibody (M02), clone M1 Western Blot analysis of MLH1 expression in Hela S3 NE (Cat # L013V3).

Please check the [product details page](#) for more images. Overall 7 images are available for ABIN561826.