

Datasheet for ABIN561900  
**anti-MYL5 antibody (AA 1-132)**



[Go to Product page](#)

3 Images

## Overview

Quantity:	100 µg
Target:	MYL5
Binding Specificity:	AA 1-132
Reactivity:	Human
Host:	Mouse
Clonality:	Monoclonal
Conjugate:	This MYL5 antibody is un-conjugated
Application:	Western Blotting (WB), ELISA

## Product Details

Purpose:	Mouse monoclonal antibody raised against a full length recombinant MYL5.
Immunogen:	MYL5 (AAH40050.1, 1 a.a. ~ 132 a.a) full-length recombinant protein with GST tag. MW of the GST tag alone is 26 KDa.
Sequence:	MDQNRDGFID KEDLKDTYAS LGKTNVKDDE LDAMLKEASG PINFTMFLNL FGEKLSGTDA EETILNAFKM LDPDGKGGKIN KEYIKRLLMS QADKMTAEEV DQMFQFASID VAGNLDYKAL SYVITHGEEK EE
Clone:	1C5
Isotype:	IgG2a
Cross-Reactivity:	Human
Characteristics:	Antibody Reactive Against Recombinant Protein.

## Target Details

Target:	MYL5
Alternative Name:	MYL5 (MYL5 Products)
Background:	Full Gene Name: myosin, light chain 5, regulatory Synonyms:
Gene ID:	4636

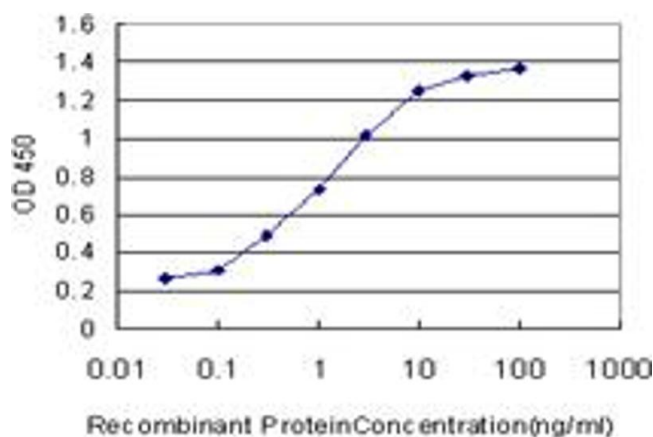
## Application Details

Application Notes:	Optimal working dilution should be determined by the investigator.
Restrictions:	For Research Use only

## Handling

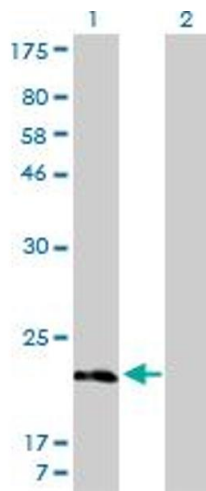
Buffer:	In 1x PBS, pH 7.4
Handling Advice:	Aliquot to avoid repeated freezing and thawing.
Storage:	-20 °C
Storage Comment:	Store at -20°C or lower. Aliquot to avoid repeated freezing and thawing.

## Images



### ELISA

**Image 1.** Detection limit for recombinant GST tagged MYL5 is approximately 0.03ng/ml as a capture antibody.

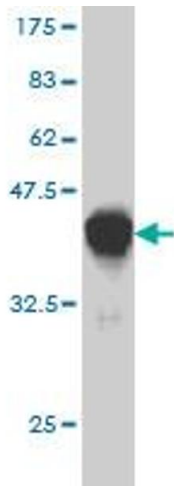


### Western Blotting

**Image 2.** Western Blot analysis of MYL5 expression in transfected 293T cell line by MYL5 monoclonal antibody (M01), clone 1C5.

Lane 1: MYL5 transfected lysate(19.5 KDa).

Lane 2: Non-transfected lysate.



### Western Blotting

**Image 3.** Western Blot detection against Immunogen (40.26 kDa).