



Datasheet for ABIN561913
anti-MYT1 antibody (AA 586-685)



[Go to Product page](#)

2 Images

Overview

Quantity:	50 µL
Target:	MYT1
Binding Specificity:	AA 586-685
Reactivity:	Human
Host:	Mouse
Clonality:	Polyclonal
Conjugate:	This MYT1 antibody is un-conjugated
Application:	Western Blotting (WB), ELISA

Product Details

Purpose:	Mouse polyclonal antibody raised against a partial recombinant MYT1.
Immunogen:	MYT1 (NP_004526, 586 a.a. ~ 685 a.a) partial recombinant protein with GST tag.
Sequence:	DYASFDAQVF GKRMLAPKIQ TSETSPKAFQ CFDYSQDAEA AHMAATAILN LSTRCWEMPE NLSTKPQDLP SKSVDIEVDE NGTLDLSMHK HRKRENAFPS
Cross-Reactivity:	Human
Characteristics:	Antibody Reactive Against Recombinant Protein.

Target Details

Target:	MYT1
Alternative Name:	MYT1 (MYT1 Products)

Target Details

Background: Full Gene Name: myelin transcription factor 1
Synonyms: C20orf36,MTF1,MYTI,PLPB1

Gene ID: 4661

NCBI Accession: [NM_004535](#)

Pathways: [Cell Division Cycle](#)

Application Details

Application Notes: Optimal working dilution should be determined by the investigator.

Restrictions: For Research Use only

Handling

Format: Liquid

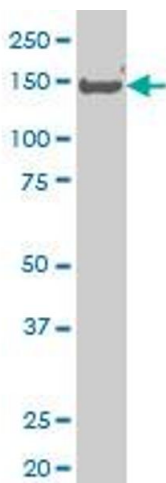
Buffer: 50 % glycerol

Handling Advice: Aliquot to avoid repeated freezing and thawing.

Storage: -20 °C

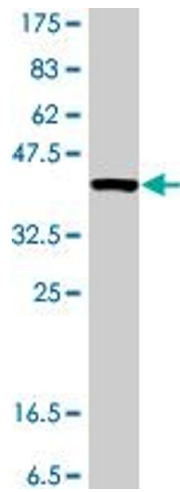
Storage Comment: Store at -20°C or lower. Aliquot to avoid repeated freezing and thawing.

Images



Western Blotting

Image 1. MYT1 polyclonal antibody (A01), Lot # 051219JC01. Western Blot analysis of MYT1 expression in Daoy.



Western Blotting

Image 2. Western Blot detection against Immunogen (37 kDa).