



[Go to Product page](#)

Datasheet for ABIN561933
anti-Nebulin antibody (AA 2108-2217)

2 Images

Overview

Quantity:	100 µg
Target:	Nebulin (NEB)
Binding Specificity:	AA 2108-2217
Reactivity:	Human
Host:	Mouse
Clonality:	Monoclonal
Conjugate:	This Nebulin antibody is un-conjugated
Application:	ELISA, Western Blotting (WB)

Product Details

Purpose:	Mouse monoclonal antibody raised against a partial recombinant NEB.
Immunogen:	NEB (NP_004534, 2108 a.a. ~ 2217 a.a) partial recombinant protein with GST tag. MW of the GST tag alone is 26 KDa.
Sequence:	NTKTSYHTPA DMLSVTAAKD AQANITNTNY KHLIHKYILL PDAMNIELTR NMNRIQSDNE YKQDYNEWYK GLGWSPAGSL EVEKAKKATE YASDQKYRQH PSNFQFKKLT
Clone:	1F4
Isotype:	IgG1
Cross-Reactivity:	Human
Characteristics:	Antibody Reactive Against Recombinant Protein.

Target Details

Target:	Nebulin (NEB)
Alternative Name:	NEB (NEB Products)
Target Type:	Chemical
Background:	Full Gene Name: nebulin Synonyms: DKFZp686C1456,FLJ11505,FLJ36536,FLJ39568,FLJ39584,NEB177D,NEM2
Gene ID:	4703
NCBI Accession:	NM_004543

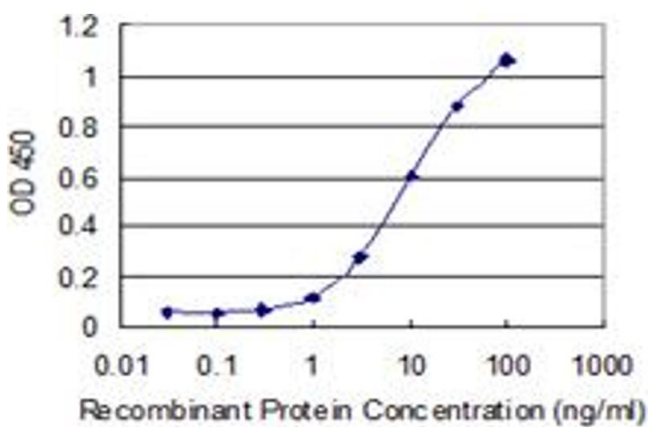
Application Details

Application Notes:	Optimal working dilution should be determined by the investigator.
Restrictions:	For Research Use only

Handling

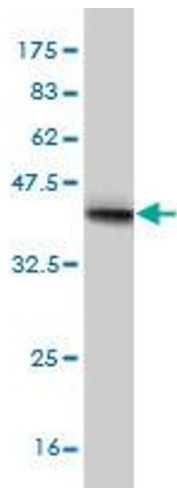
Buffer:	In 1x PBS, pH 7.4
Handling Advice:	Aliquot to avoid repeated freezing and thawing.
Storage:	-20 °C
Storage Comment:	Store at -20°C or lower. Aliquot to avoid repeated freezing and thawing.

Images



ELISA

Image 1. Detection limit for recombinant GST tagged NEB is 0.3 ng/ml as a capture antibody.



Western Blotting

Image 2. Western Blot detection against Immunogen (37.84 kDa).