



[Go to Product page](#)

Datasheet for ABIN561954

## anti-NELL1 antibody (AA 304-403)

4 Images

1 Publication

### Overview

Quantity:	100 µg
Target:	NELL1
Binding Specificity:	AA 304-403
Reactivity:	Human
Host:	Mouse
Clonality:	Monoclonal
Conjugate:	This NELL1 antibody is un-conjugated
Application:	Western Blotting (WB), ELISA, Immunofluorescence (IF), Immunoprecipitation (IP)

### Product Details

Purpose:	Mouse monoclonal antibody raised against a partial recombinant NELL1.
Immunogen:	NELL1 (NP_006148, 304 a.a. ~ 403 a.a) partial recombinant protein with GST tag. MW of the GST tag alone is 26 KDa.
Sequence:	CRRMSCPPLN CSPDSLPHVI AGQCCKVCRP KCIYGGKVLVLA EGQRILTKSC RECRGGVLVK ITEMCPPLNC SEKDHILPEN QCCRVCGRHN FCAEGPKCGE
Clone:	6A8
Isotype:	IgG2a
Cross-Reactivity:	Human
Characteristics:	Antibody Reactive Against Recombinant Protein.

## Target Details

---

Target:	NELL1
Alternative Name:	NELL1 ( <a href="#">NELL1 Products</a> )
Background:	Full Gene Name: NEL-like 1 (chicken) Synonyms: FLJ45906, IDH3GL, NRP1
Gene ID:	4745
NCBI Accession:	<a href="#">NM_006157</a>

## Application Details

---

Application Notes:	Optimal working dilution should be determined by the investigator.
Restrictions:	For Research Use only

## Handling

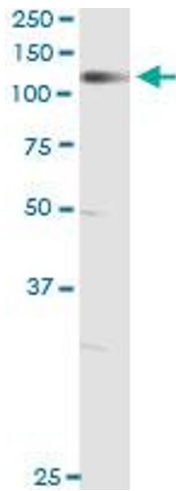
---

Buffer:	In 1x PBS, pH 7.4
Handling Advice:	Aliquot to avoid repeated freezing and thawing.
Storage:	-20 °C
Storage Comment:	Store at -20°C or lower. Aliquot to avoid repeated freezing and thawing.

## Publications

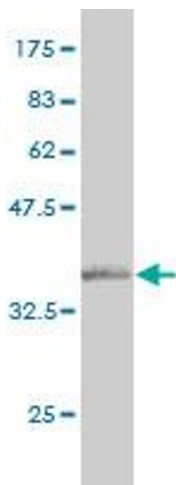
---

Product cited in:	Franke, Hampe, Rosenstiel, Becker, Wagner, Häsler, Little, Huse, Ruether, Balschun, Wittig, Elsharawy, Mayr, Albrecht, Prescott, Onnie, Fournier, Keith, Radelof, Platzner, Mathew, Stoll, Krawczak et al.: "Systematic association mapping identifies NELL1 as a novel IBD disease gene. ..." in: <b>PLoS ONE</b> , Vol. 2, Issue 8, pp. e691, (2007) ( <a href="#">PubMed</a> ).
-------------------	--



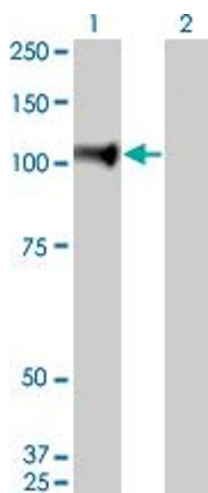
#### Western Blotting

**Image 1.** Immunoprecipitation of NELL1 transfected lysate using anti-NELL1 monoclonal antibody and Protein A Magnetic Bead , and immunoblotted with NELL1 MaxPab rabbit polyclonal antibody.



#### Western Blotting

**Image 2.** Western Blot detection against Immunogen (36.74 KDa) .



#### Western Blotting

**Image 3.** Western Blot analysis of NELL1 expression in transfected 293T cell line by NELL1 monoclonal antibody (M01), clone 6A8.

Lane 1: NELL1 transfected lysate(89.607 KDa).

Lane 2: Non-transfected lysate.

Please check the [product details page](#) for more images. Overall 4 images are available for ABIN561954.