

Datasheet for ABIN561980  
**anti-NFKB1 antibody (AA 860-969)**

## 5 Images

[Go to Product page](#)

## Overview

Quantity:	100 µg
Target:	NFKB1
Binding Specificity:	AA 860-969
Reactivity:	Human
Host:	Mouse
Clonality:	Monoclonal
Conjugate:	This NFKB1 antibody is un-conjugated
Application:	Western Blotting (WB), ELISA, Immunofluorescence (IF), Proximity Ligation Assay (PLA), RNA Interference (RNAi)

## Product Details

Purpose:	Mouse monoclonal antibody raised against a partial recombinant NFKB1.
Immunogen:	NFKB1 (AAH51765, 860 a.a. ~ 969 a.a) partial recombinant protein with GST tag. MW of the GST tag alone is 26 KDa.
Sequence:	MDNYEVSGGT VRELVEALRQ MGYTEAIEVI QAASSPVKTT SQAHSPLPLSP ASTRQQIDEL RDSDSVCD SG VETSFRKLSF TESLTSGASL LTLNKMPHDY GQEGPLEGKI
Clone:	2E6
Isotype:	IgG1
Cross-Reactivity:	Human
Characteristics:	Antibody Reactive Against Recombinant Protein.

## Target Details

Target:	NFKB1
Alternative Name:	NFKB1 ( <a href="#">NFKB1 Products</a> )
Background:	Full Gene Name: nuclear factor of kappa light polypeptide gene enhancer in B-cells 1 Synonyms: DKFZp686C01211,EBP-1,KBF1,MGC54151,NF-kappa-B,NFKB-p105,NFKB-p50,p105,p50
Gene ID:	4790
Pathways:	<a href="#">p53 Signaling</a> , <a href="#">NF-kappaB Signaling</a> , <a href="#">RTK Signaling</a> , <a href="#">TCR Signaling</a> , <a href="#">TLR Signaling</a> , <a href="#">Fc-epsilon Receptor Signaling Pathway</a> , <a href="#">Neurotrophin Signaling Pathway</a> , <a href="#">Activation of Innate immune Response</a> , <a href="#">Myometrial Relaxation and Contraction</a> , <a href="#">Regulation of Carbohydrate Metabolic Process</a> , <a href="#">Hepatitis C</a> , <a href="#">Toll-Like Receptors Cascades</a> , <a href="#">BCR Signaling</a> , <a href="#">S100 Proteins</a>

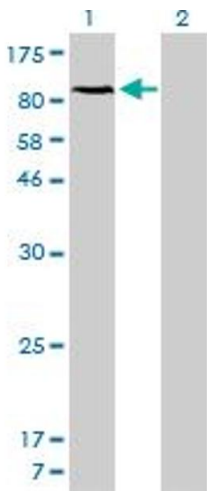
## Application Details

Application Notes:	Optimal working dilution should be determined by the investigator.
Restrictions:	For Research Use only

## Handling

Buffer:	In 1x PBS, pH 7.4
Handling Advice:	Aliquot to avoid repeated freezing and thawing.
Storage:	-20 °C
Storage Comment:	Store at -20°C or lower. Aliquot to avoid repeated freezing and thawing.

## Images

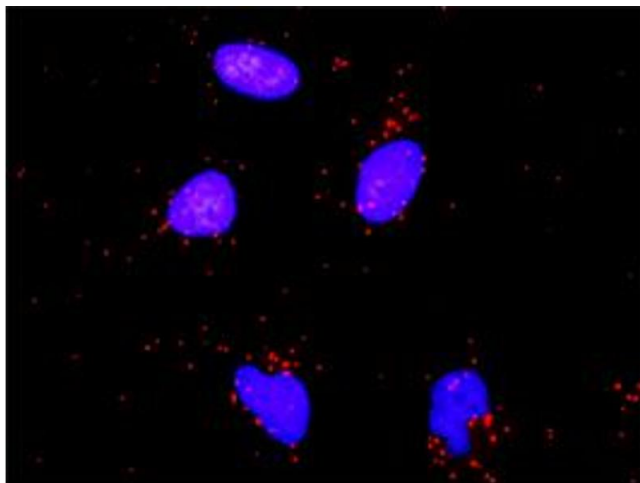


### Western Blotting

**Image 1.** Western Blot analysis of NFKB1 expression in transfected 293T cell line by NFKB1 monoclonal antibody (M01), clone 2E6.

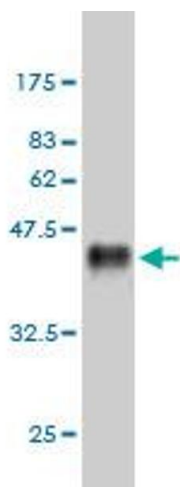
Lane 1: NFKB1 transfected lysate(105.4 kDa).

Lane 2: Non-transfected lysate.



#### Proximity Ligation Assay

**Image 2.** Proximity Ligation Analysis of protein-protein interactions between IKBKB and NFKB1. HeLa cells were stained with anti- $\text{IKBKB}$  rabbit purified polyclonal 1:1200 and anti-NFKB1 mouse monoclonal antibody 1:50. Each red dot represents the detection of protein-protein interaction complex, and nuclei were counterstained with DAPI (blue).



#### Western Blotting

**Image 3.** Western Blot detection against Immunogen (37.73 kDa) .

Please check the [product details page](#) for more images. Overall 5 images are available for ABIN561980.