



[Go to Product page](#)

Datasheet for ABIN562003
anti-NME1 antibody (AA 1-152)

6 Images

Overview

Quantity:	100 µg
Target:	NME1
Binding Specificity:	AA 1-152
Reactivity:	Human
Host:	Mouse
Clonality:	Monoclonal
Conjugate:	This NME1 antibody is un-conjugated
Application:	Western Blotting (WB), ELISA, Immunofluorescence (IF), RNA Interference (RNAi)

Product Details

Purpose:	Mouse monoclonal antibody raised against a full length recombinant NME1.
Immunogen:	NME1 (AAH00293, 1 a.a. ~ 152 a.a) full-length recombinant protein with GST tag. MW of the GST tag alone is 26 KDa.
Sequence:	MANCERTFIA IKPDGVQRGL VGEIIKRFEQ KGFRLVGLKF MQASEDLLKE HYVDLKDRPF FAGLVKYMHS GPVAMVWEG LNVVKTGRVM LGETNPADSK PGTIRGDFCI QVGRNIIHGS DSVESAEKEI GLWFHPEELV DYTSCAQNWI YE
Clone:	2H1
Isotype:	IgG1
Cross-Reactivity:	Human
Characteristics:	Antibody Reactive Against Recombinant Protein.

Target Details

Target:	NME1
Alternative Name:	NME1 (NME1 Products)
Background:	Full Gene Name: non-metastatic cells 1, protein (NM23A) expressed in Synonyms: AWD,GAAD,NB,NBS,NDPK-A,NDPKA,NM23,NM23-H1
Gene ID:	4830
Pathways:	Apoptosis , Nucleotide Phosphorylation , Carbohydrate Homeostasis , Ribonucleoside Biosynthetic Process

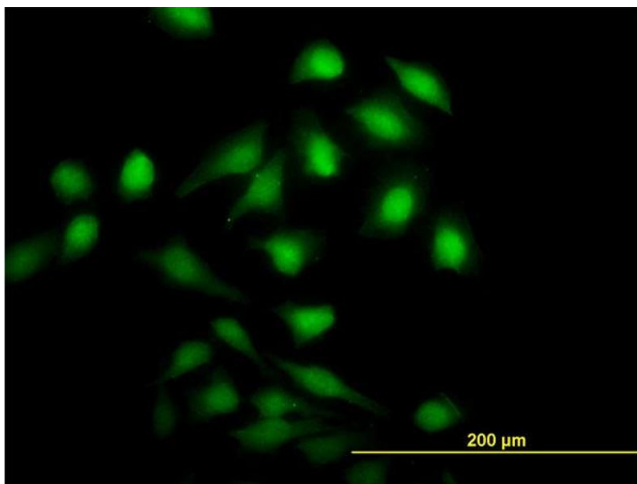
Application Details

Application Notes:	Optimal working dilution should be determined by the investigator.
Restrictions:	For Research Use only

Handling

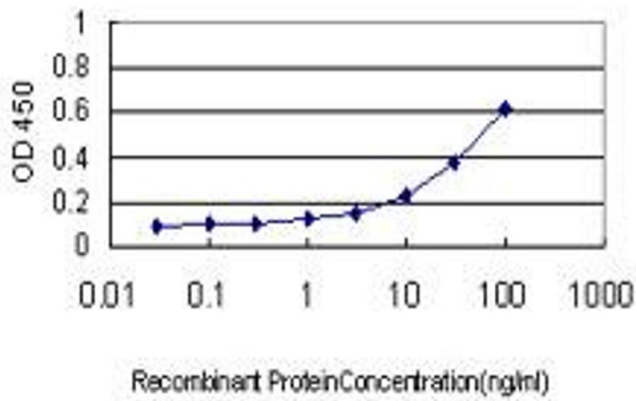
Buffer:	In 1x PBS, pH 7.4
Handling Advice:	Aliquot to avoid repeated freezing and thawing.
Storage:	-20 °C
Storage Comment:	Store at -20°C or lower. Aliquot to avoid repeated freezing and thawing.

Images



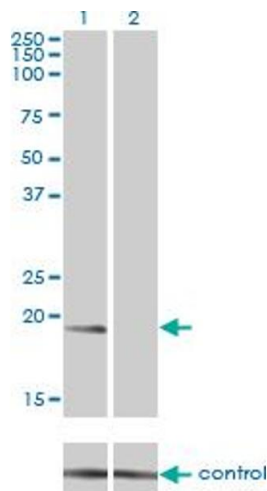
Immunofluorescence

Image 1. Immunofluorescence of monoclonal antibody to NME1 on HeLa cell. [antibody concentration 20 ug/ml]



ELISA

Image 2. Detection limit for recombinant GST tagged NME1 is approximately 1ng/ml as a capture antibody.



Western Blotting

Image 3. Western blot analysis of NME1 over-expressed 293 cell line, cotransfected with NME1 Validated Chimera RNAi (Lane 2) or non-transfected control (Lane 1). Blot probed with NME1 monoclonal antibody (M01), clone 2H1. GAPDH (36.1 kDa) used as specificity and loading control.

Please check the [product details page](#) for more images. Overall 6 images are available for ABIN562003.