



[Go to Product page](#)

Datasheet for ABIN562005
anti-NME2 antibody (AA 1-152)

1 Image

Overview

Quantity:	50 µL
Target:	NME2
Binding Specificity:	AA 1-152
Reactivity:	Human
Host:	Mouse
Clonality:	Polyclonal
Conjugate:	This NME2 antibody is un-conjugated
Application:	Western Blotting (WB), ELISA

Product Details

Purpose:	Mouse polyclonal antibody raised against a full-length recombinant NME2.
Immunogen:	NME2 (AAH02476, 1 a.a. ~ 152 a.a) full-length recombinant protein with GST tag.
Sequence:	MANLERTFIA IKPDGVQRGL VGEIIKRFEQ KGFRLVAMKF LRASEEHLKQ HYIDLKDRPF FPGLVKYMNS GPVAMVWEG LNVVKTGRVM LGETNPADSK PGTIRGDFCI QVGRNIIHGS DSVKSAEKEI SLWFKPEELV DYKSCAHDWV YE
Cross-Reactivity:	Human
Characteristics:	Antibody Reactive Against Recombinant Protein.

Target Details

Target:	NME2
---------	------

Target Details

Alternative Name:	NME2 (NME2 Products)
Background:	Full Gene Name: non-metastatic cells 2, protein (NM23B) expressed in Synonyms: MGC111212,NDPK-B,NDPKB,NM23-H2,NM23B,puf
Gene ID:	4831

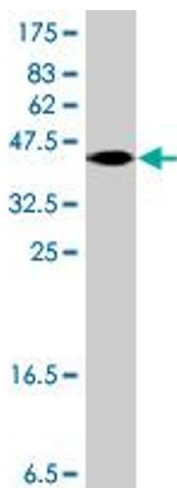
Application Details

Application Notes:	Optimal working dilution should be determined by the investigator.
Restrictions:	For Research Use only

Handling

Format:	Liquid
Buffer:	50 % glycerol
Handling Advice:	Aliquot to avoid repeated freezing and thawing.
Storage:	-20 °C
Storage Comment:	Store at -20°C or lower. Aliquot to avoid repeated freezing and thawing.

Images



Western Blotting

Image 1. Western Blot detection against Immunogen (42.83 KDa) .