



[Go to Product page](#)

Datasheet for ABIN562027

anti-NOTCH3 antibody (AA 47-156)

1 Image

Overview

Quantity:	50 µL
Target:	NOTCH3
Binding Specificity:	AA 47-156
Reactivity:	Human
Host:	Mouse
Clonality:	Polyclonal
Conjugate:	This NOTCH3 antibody is un-conjugated
Application:	Western Blotting (WB), ELISA

Product Details

Purpose:	Mouse polyclonal antibody raised against a partial recombinant NOTCH3.
Immunogen:	NOTCH3 (NP_000426, 47 a.a. ~ 156 a.a) partial recombinant protein with GST tag.
Sequence:	SPCANGGRCT QLPSREAACL CPPGWVGERC QLEDPCHSGP CAGRGVCQSS VVAGTARFSC RCPRGFRGPD CSLPDPCLSS PCAHGARCSV GPDGRFLCSC PPGYQGRSCR
Cross-Reactivity:	Human
Characteristics:	Antibody Reactive Against Recombinant Protein.

Target Details

Target:	NOTCH3
Alternative Name:	NOTCH3 (NOTCH3 Products)

Target Details

Background:	Full Gene Name: Notch homolog 3 (Drosophila) Synonyms: CADASIL,CASIL
Gene ID:	4854
NCBI Accession:	NM_000435
Pathways:	Notch Signaling

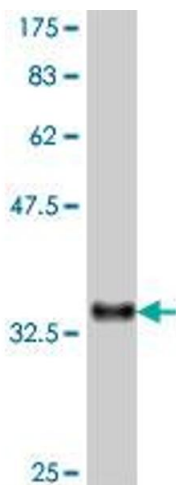
Application Details

Application Notes:	Optimal working dilution should be determined by the investigator.
Restrictions:	For Research Use only

Handling

Format:	Liquid
Buffer:	50 % glycerol
Handling Advice:	Aliquot to avoid repeated freezing and thawing.
Storage:	-20 °C
Storage Comment:	Store at -20°C or lower. Aliquot to avoid repeated freezing and thawing.

Images



Western Blotting

Image 1. Western Blot detection against Immunogen (38.21 kDa).