



[Go to Product page](#)

Datasheet for ABIN562073

anti-OPRL1 antibody (AA 110-212)

1 Image

Overview

Quantity:	50 µL
Target:	OPRL1
Binding Specificity:	AA 110-212
Reactivity:	Human
Host:	Mouse
Clonality:	Polyclonal
Conjugate:	This OPRL1 antibody is un-conjugated
Application:	Western Blotting (WB), ELISA

Product Details

Purpose:	Mouse polyclonal antibody raised against a partial recombinant OPRL1.
Immunogen:	OPRL1 (AAH38433, 110 a.a. ~ 212 a.a) partial recombinant protein with GST tag.
Sequence:	DILLGFWPFG NALCKTVIAI DYNNMFTSTF TLTAMSVDRY VAICHPIRAL DVRTSSKAQA VNVAIWALAS VVGVPVAIMG SAQVEDEEIE CLVEIPTPD YWG
Cross-Reactivity:	Human
Characteristics:	Antibody Reactive Against Recombinant Protein.

Target Details

Target:	OPRL1
Alternative Name:	OPRL1 (OPRL1 Products)

Target Details

Background:	Full Gene Name: opiate receptor-like 1 Synonyms: KOR-3,MGC34578,NOCIR, OOR, ORL1
Gene ID:	4987

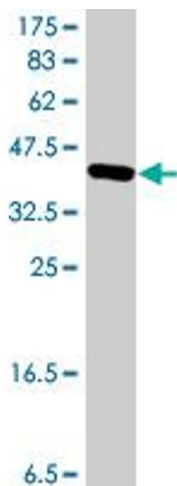
Application Details

Application Notes:	Optimal working dilution should be determined by the investigator.
Restrictions:	For Research Use only

Handling

Format:	Liquid
Buffer:	50 % glycerol
Handling Advice:	Aliquot to avoid repeated freezing and thawing.
Storage:	-20 °C
Storage Comment:	Store at -20°C or lower. Aliquot to avoid repeated freezing and thawing.

Images



Western Blotting

Image 1. Western Blot detection against Immunogen (37.44 kDa).