



[Go to Product page](#)

Datasheet for ABIN562099

anti-PAI1 antibody (AA 86-185)

4 Images

1 Publication

Overview

Quantity:	100 µg
Target:	PAI1 (SERPINE1)
Binding Specificity:	AA 86-185
Reactivity:	Human
Host:	Mouse
Clonality:	Monoclonal
Conjugate:	This PAI1 antibody is un-conjugated
Application:	Western Blotting (WB), ELISA, Immunoprecipitation (IP)

Product Details

Purpose:	Mouse monoclonal antibody raised against a partial recombinant SERPINE1.
Immunogen:	SERPINE1 (NP_000593, 86 a.a. ~ 185 a.a) partial recombinant protein with GST tag. MW of the GST tag alone is 26 KDa.
Sequence:	GFKIDDKGMA PALRHLYKEL MGPWNKDEIS TTDAlFVQRD LKLVQGFMPH FFRLFRSTVK QVDFSEVERA RFIINDWVKT HTKGMISNLL GKGAVDQLTR
Clone:	3F2
Isotype:	IgG2a
Cross-Reactivity:	Human
Characteristics:	Antibody Reactive Against Recombinant Protein.

Target Details

Target:	PAI1 (SERPINE1)
Alternative Name:	SERPINE1 (SERPINE1 Products)
Background:	Full Gene Name: serpin peptidase inhibitor, clade E (nexin, plasminogen activator inhibitor type 1), member 1 Synonyms: PAI,PAI-1,PAI1,PLANH1
Gene ID:	5054
NCBI Accession:	NM_000602
Pathways:	p53 Signaling , Cellular Response to Molecule of Bacterial Origin , Carbohydrate Homeostasis , Autophagy , Smooth Muscle Cell Migration

Application Details

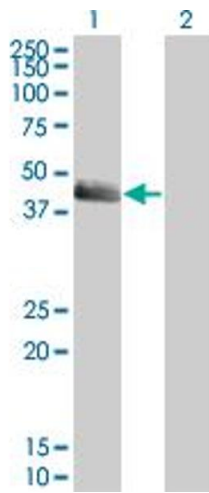
Application Notes:	Optimal working dilution should be determined by the investigator.
Restrictions:	For Research Use only

Handling

Buffer:	In 1x PBS, pH 7.4
Handling Advice:	Aliquot to avoid repeated freezing and thawing.
Storage:	-20 °C
Storage Comment:	Store at -20°C or lower. Aliquot to avoid repeated freezing and thawing.

Publications

Product cited in:	Slany, Haudek-Prinz, Meshcheryakova, Bileck, Lamm, Zielinski, Gerner, Drach: "Extracellular matrix remodeling by bone marrow fibroblast-like cells correlates with disease progression in multiple myeloma." in: Journal of proteome research , Vol. 13, Issue 2, pp. 844-54, (2014) (PubMed).
-------------------	---

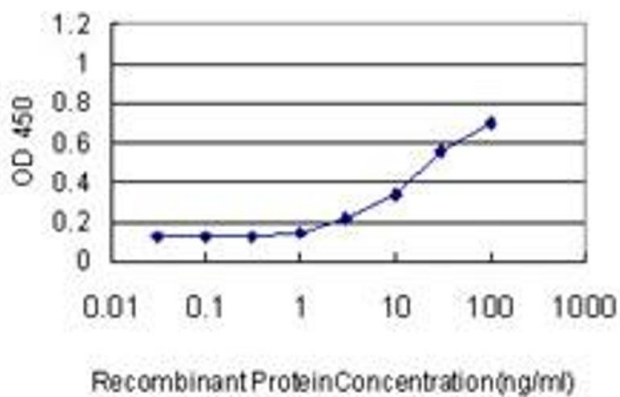


Western Blotting

Image 1. Western Blot analysis of SERPINE1 expression in transfected 293T cell line by SERPINE1 monoclonal antibody (M01), clone 3F2.

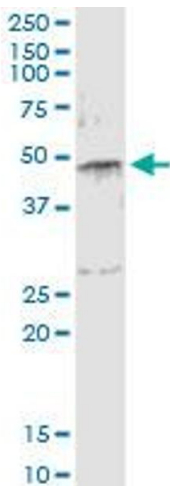
Lane 1: SERPINE1 transfected lysate(45.1 KDa).

Lane 2: Non-transfected lysate.



ELISA

Image 2. Detection limit for recombinant GST tagged SERPINE1 is approximately 0.3ng/ml as a capture antibody.



Western Blotting

Image 3. Immunoprecipitation of SERPINE1 transfected lysate using anti-SERPINE1 monoclonal antibody and Protein A Magnetic Bead , and immunoblotted with SERPINE1 MaxPab rabbit polyclonal antibody.

Please check the [product details page](#) for more images. Overall 4 images are available for ABIN562099.