



[Go to Product page](#)

Datasheet for ABIN562148
anti-PDE4C antibody (AA 1-99)

1 Image

Overview

| | |
|----------------------|--------------------------------------|
| Quantity: | 50 µL |
| Target: | PDE4C |
| Binding Specificity: | AA 1-99 |
| Reactivity: | Human |
| Host: | Mouse |
| Clonality: | Polyclonal |
| Conjugate: | This PDE4C antibody is un-conjugated |
| Application: | Western Blotting (WB), ELISA |

Product Details

| | |
|-------------------|---|
| Purpose: | Mouse polyclonal antibody raised against a partial recombinant PDE4C. |
| Immunogen: | PDE4C (NP_000914, 1 a.a. ~ 99 a.a) partial recombinant protein with GST tag. |
| Sequence: | MENLGVGEGA EACSRLSRSR GRHSMTRAPK HLWRQPRRPI RIQRFYSDP DKSAGCRERD LSPRPELRKS RLSWPVSSCR RFDLENLSC GRRALDPQS |
| Cross-Reactivity: | Human |
| Characteristics: | Antibody Reactive Against Recombinant Protein. |

Target Details

| | |
|-------------------|--|
| Target: | PDE4C |
| Alternative Name: | PDE4C (PDE4C Products) |

Target Details

| | |
|-----------------|---|
| Background: | Full Gene Name: phosphodiesterase 4C, cAMP-specific (phosphodiesterase E1 dunce homolog, Drosophila) Synonyms: DPDE1,MGC126222 |
| Gene ID: | 5143 |
| NCBI Accession: | NM_000923 |
| Pathways: | Negative Regulation of Hormone Secretion, cAMP Metabolic Process |

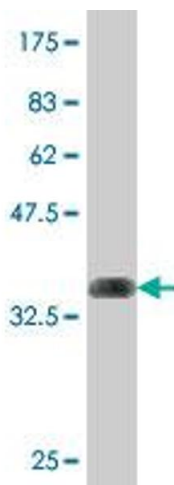
Application Details

| | |
|--------------------|--|
| Application Notes: | Optimal working dilution should be determined by the investigator. |
| Restrictions: | For Research Use only |

Handling

| | |
|------------------|--|
| Format: | Liquid |
| Buffer: | 50 % glycerol |
| Handling Advice: | Aliquot to avoid repeated freezing and thawing. |
| Storage: | -20 °C |
| Storage Comment: | Store at -20°C or lower. Aliquot to avoid repeated freezing and thawing. |

Images



Western Blotting

Image 1. Western Blot detection against Immunogen (37 kDa).