

Datasheet for ABIN562150
anti-PDE6D antibody (AA 1-150)



[Go to Product page](#)

4 Images

Overview

Quantity:	100 µg
Target:	PDE6D
Binding Specificity:	AA 1-150
Reactivity:	Human
Host:	Mouse
Clonality:	Monoclonal
Conjugate:	This PDE6D antibody is un-conjugated
Application:	ELISA, Western Blotting (WB), Immunofluorescence (IF)

Product Details

Purpose:	Mouse monoclonal antibody raised against a full length recombinant PDE6D.
Immunogen:	PDE6D (AAH07831, 1 a.a. ~ 150 a.a) full-length recombinant protein with GST tag. MW of the GST tag alone is 26 KDa.
Sequence:	MSAKDERARE ILRGFKLNWM NLRDAETGKI LWQGTEDLSV PGVEHEARVP KKILKCKAVS RELNFSSTEQ MEKFRLEQKV YFKGQCLEEW FFEFGFVIPN STNTWQSLIE AAPESQMMPA SVLTGNVIE TKFFDDDLLV STSRVRLFYV
Clone:	5C7
Isotype:	IgG2b
Cross-Reactivity:	Human
Characteristics:	Antibody Reactive Against Recombinant Protein.

Target Details

Target:	PDE6D
Alternative Name:	PDE6D (PDE6D Products)
Background:	Full Gene Name: phosphodiesterase 6D, cGMP-specific, rod, delta Synonyms: PDED
Gene ID:	5147

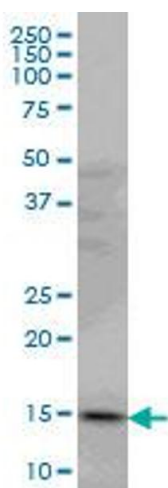
Application Details

Application Notes:	Optimal working dilution should be determined by the investigator.
Restrictions:	For Research Use only

Handling

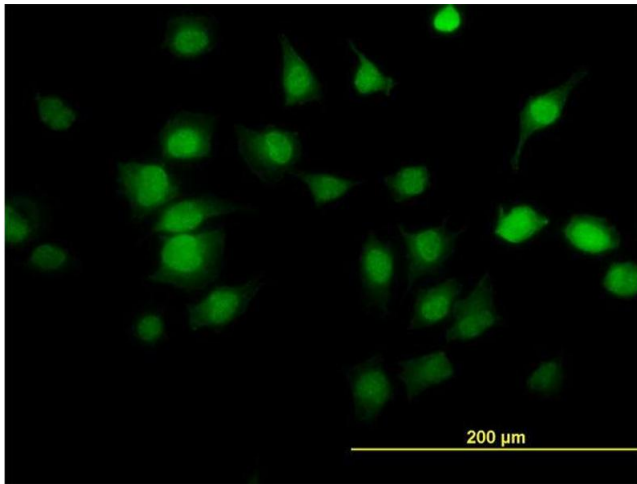
Buffer:	In 1x PBS, pH 7.4
Handling Advice:	Aliquot to avoid repeated freezing and thawing.
Storage:	-20 °C
Storage Comment:	Store at -20°C or lower. Aliquot to avoid repeated freezing and thawing.

Images



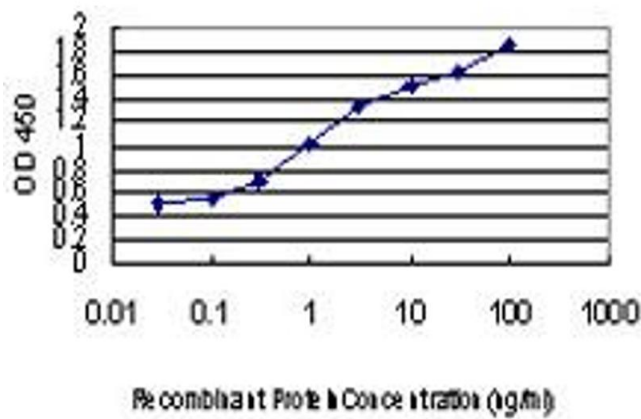
Western Blotting

Image 1. PDE6D monoclonal antibody (M06), clone 5C7
Western Blot analysis of PDE6D expression in HeLa .



Immunofluorescence

Image 2. Immunofluorescence of monoclonal antibody to PDE6D on HeLa cell. [antibody concentration 20 ug/ml]



ELISA

Image 3. Detection limit for recombinant GST tagged PDE6D is approximately 0.03ng/ml as a capture antibody.

Please check the [product details page](#) for more images. Overall 4 images are available for ABIN562150.