

Datasheet for ABIN562174
anti-PET112L antibody (AA 466-556)[Go to Product page](#)

3 Images

Overview

Quantity:	100 µg
Target:	PET112L (PET112)
Binding Specificity:	AA 466-556
Reactivity:	Human
Host:	Mouse
Clonality:	Monoclonal
Conjugate:	This PET112L antibody is un-conjugated
Application:	Western Blotting (WB), ELISA

Product Details

Purpose:	Mouse monoclonal antibody raised against a partial recombinant PET112L.
Immunogen:	PET112L (NP_004555, 466 a.a. ~ 556 a.a) partial recombinant protein with GST tag. MW of the GST tag alone is 26 KDa.
Sequence:	SAAKQVFEEL WKREGKTPGQ IVSEKQLELM QDQGALEQLC HSVMEAHPQV VMDVKNRNPR AINKLIGLVR KATQSRADPV MIKEILEKKL S
Clone:	6B2
Isotype:	IgG2a
Cross-Reactivity:	Human
Characteristics:	Antibody Reactive Against Recombinant Protein.

Target Details

Target:	PET112L (PET112)
Alternative Name:	PET112L (PET112 Products)
Background:	Full Gene Name: PET112-like (yeast) Synonyms: HSPC199,PET112
Gene ID:	5188
NCBI Accession:	NM_004564

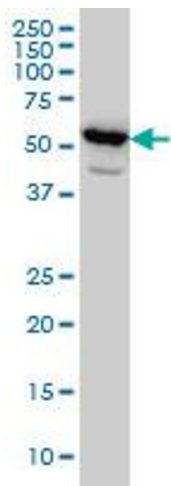
Application Details

Application Notes:	Optimal working dilution should be determined by the investigator.
Restrictions:	For Research Use only

Handling

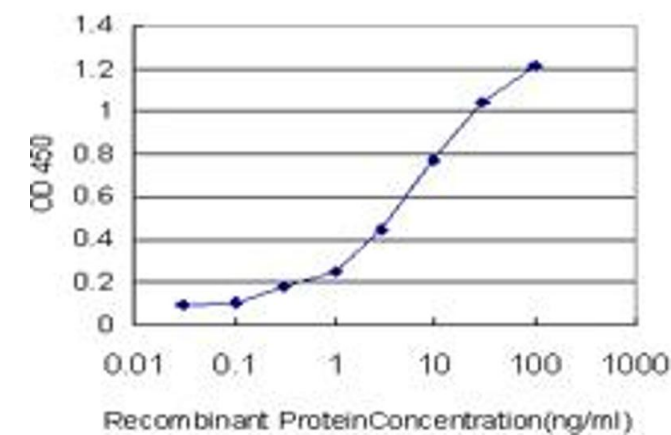
Buffer:	In 1x PBS, pH 7.4
Handling Advice:	Aliquot to avoid repeated freezing and thawing.
Storage:	-20 °C
Storage Comment:	Store at -20°C or lower. Aliquot to avoid repeated freezing and thawing.

Images



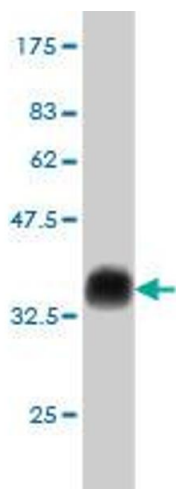
Western Blotting

Image 1. PET112L monoclonal antibody (M01), clone 6B2
Western Blot analysis of PET112L expression in HeLa .



ELISA

Image 2. Detection limit for recombinant GST tagged PET112L is approximately 0.3ng/ml as a capture antibody.



Western Blotting

Image 3. Western Blot detection against Immunogen (35.75 kDa) .