



[Go to Product page](#)

Datasheet for ABIN562243  
**anti-PIN4 antibody (AA 61-156)**

1 Image

### Overview

Quantity:	50 µL
Target:	PIN4
Binding Specificity:	AA 61-156
Reactivity:	Human
Host:	Mouse
Clonality:	Polyclonal
Conjugate:	This PIN4 antibody is un-conjugated
Application:	Western Blotting (WB), ELISA

### Product Details

Purpose:	Mouse polyclonal antibody raised against a partial recombinant PIN4.
Immunogen:	PIN4 (NP_006214, 61 a.a. ~ 156 a.a) partial recombinant protein with GST tag.
Sequence:	NAVKVRHILC EKHGKIMEAM EKLKSGMRFN EVAAQYSEDK ARQGGDLGWM TRGSMVGPFG EAAFALPVSG MDKPVFTDPP VKTKFGYHII MVEGRK
Cross-Reactivity:	Human
Characteristics:	Antibody Reactive Against Recombinant Protein.

### Target Details

Target:	PIN4
Alternative Name:	PIN4 ( <a href="#">PIN4 Products</a> )

## Target Details

Background:	Full Gene Name: protein (peptidylprolyl cis/trans isomerase) NIMA-interacting, 4 (parvulin) Synonyms: EPVH,MGC138486,PAR14,PAR17
Gene ID:	5303
NCBI Accession:	<a href="#">NM_006223</a>

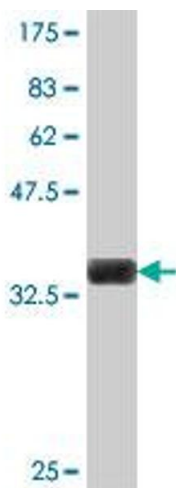
## Application Details

Application Notes:	Optimal working dilution should be determined by the investigator.
Restrictions:	For Research Use only

## Handling

Format:	Liquid
Buffer:	50 % glycerol
Handling Advice:	Aliquot to avoid repeated freezing and thawing.
Storage:	-20 °C
Storage Comment:	Store at -20°C or lower. Aliquot to avoid repeated freezing and thawing.

## Images



### Western Blotting

**Image 1.** Western Blot detection against Immunogen (36.67 KDa) .