

Datasheet for ABIN562254  
**anti-PKM2 antibody (AA 1-531)**



[Go to Product page](#)

1 Image

1 Publication

### Overview

Quantity:	50 µL
Target:	PKM2
Binding Specificity:	AA 1-531
Reactivity:	Human
Host:	Mouse
Clonality:	Polyclonal
Conjugate:	This PKM2 antibody is un-conjugated
Application:	Western Blotting (WB), ELISA

### Product Details

Purpose:	Mouse polyclonal antibody raised against a full-length recombinant PKM2.
Immunogen:	PKM2 (AAH07640.1, 1 a.a. ~ 531 a.a) full-length recombinant protein with GST tag.
Sequence:	MSKPHSEAGT AFIQTQQLHA AMADTFLEHM CRLDIDSPPI TARNTGIICT IGPASRSVET LKEMIKSGMN VARLNFSHGT HEYHAETIKN VRTATESFAS DPILYRPVAV ALDTKGPEIR TGLIKGSGTA EVELKKGATL KITLDNAYME KCDENILWLD YKNICKVVEV GSKIYVDDGL ISLQVKQKGA DFLVTEVENG GSLGSKKGVN LPGAAVDLPA VSEKDIQDLK FGVEQDVMV FASFIRKASD VHEVRKVLGE KGKNIKISK IENHEGVRRF DEILEASDGI MVARGDLGIE IPAENVFLAQ KMMIGRCNRA GKPVICATQM LESMIKKPRP TRAEGSDVAN AVLDGADCIM LSGETAKGDY PLEAVRMQHL IAREAEAAIY HLQLFEELRR LAPITSDPTE ATAVGAVEAS FKCCSGAIIV LTKSGRSAHQ VARYRPRAPI IAVTRNPQTA RQAHLYRGIF PVLCKDPVQE AWAEDVDLRV NFAMNVGKAR GFFKKGDVVI VLTGWRPGSG FTNTMRVVPV P

## Product Details

---

Cross-Reactivity:	Human
Characteristics:	Antibody Reactive Against Recombinant Protein.

## Target Details

---

Target:	PKM2
Alternative Name:	PKM2 ( <a href="#">PKM2 Products</a> )
Background:	Full Gene Name: pyruvate kinase, muscle Synonyms: CTHBP,MGC3932,OIP3,PK3,PKM,TCB,THBP1
Gene ID:	5315
Pathways:	<a href="#">Warburg Effect</a>

## Application Details

---

Application Notes:	Optimal working dilution should be determined by the investigator.
Restrictions:	For Research Use only

## Handling

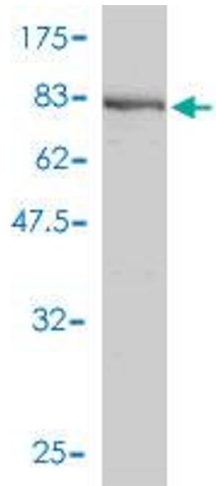
---

Format:	Liquid
Buffer:	50 % glycerol
Handling Advice:	Aliquot to avoid repeated freezing and thawing.
Storage:	-20 °C
Storage Comment:	Store at -20°C or lower. Aliquot to avoid repeated freezing and thawing.

## Publications

---

Product cited in:	Iglesias-Guimaraes, Gil-Guiñón, Gabernet, García-Belinchón, Sánchez-Osuna, Casanelles, Comella, Yuste: "Apoptotic DNA degradation into oligonucleosomal fragments, but not apoptotic nuclear morphology, relies on a cytosolic pool of DFF40/CAD endonuclease." in: <b>The Journal of biological chemistry</b> , Vol. 287, Issue 10, pp. 7766-79, (2012) ( <a href="#">PubMed</a> ).
-------------------	--



### Western Blotting

**Image 1.** Western Blot detection against Immunogen (84.52 KDa) .