



[Go to Product page](#)

Datasheet for ABIN562261
anti-PLAGL2 antibody (AA 1-100)

2 Images

Overview

Quantity:	50 µL
Target:	PLAGL2
Binding Specificity:	AA 1-100
Reactivity:	Human
Host:	Mouse
Clonality:	Polyclonal
Conjugate:	This PLAGL2 antibody is un-conjugated
Application:	ELISA, Western Blotting (WB)

Product Details

Purpose:	Mouse polyclonal antibody raised against a partial recombinant PLAGL2.
Immunogen:	PLAGL2 (NP_002648, 1 a.a. ~ 100 a.a) partial recombinant protein with GST tag.
Sequence:	MTTFFTSVPP WIQDAKQEEE VGWKLVRPR GREAESQVKC QCEISGTPFS NGEKLRPHSL PQPEQRPYSC PQLHCGKAFA SKYKLYRHMA THSAQKPHQC
Cross-Reactivity:	Human
Characteristics:	Antibody Reactive Against Recombinant Protein.

Target Details

Target:	PLAGL2
Alternative Name:	PLAGL2 (PLAGL2 Products)

Target Details

Background:	Full Gene Name: pleiomorphic adenoma gene-like 2 Synonyms: FLJ23283
Gene ID:	5326
NCBI Accession:	NM_002657

Application Details

Application Notes:	Optimal working dilution should be determined by the investigator.
Restrictions:	For Research Use only

Handling

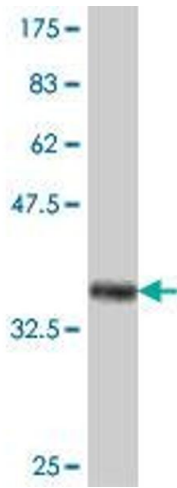
Format:	Liquid
Buffer:	50 % glycerol
Handling Advice:	Aliquot to avoid repeated freezing and thawing.
Storage:	-20 °C
Storage Comment:	Store at -20°C or lower. Aliquot to avoid repeated freezing and thawing.

Images



Western Blotting

Image 1. PLAGL2 polyclonal antibody (A01), Lot # DFC6060608QCS1 Western Blot analysis of PLAGL2 expression in LNCaP .



Western Blotting

Image 2. Western Blot detection against Immunogen (37.11 kDa).