



[Go to Product page](#)

Datasheet for ABIN562271

anti-PLG antibody (AA 21-120)

2 Images

1 Publication

Overview

Quantity:	100 µg
Target:	PLG
Binding Specificity:	AA 21-120
Reactivity:	Human
Host:	Mouse
Clonality:	Monoclonal
Conjugate:	This PLG antibody is un-conjugated
Application:	Western Blotting (WB), ELISA

Product Details

Purpose:	Mouse monoclonal antibody raised against a partial recombinant PLG.
Immunogen:	PLG (AAH60513, 21 a.a. ~ 120 a.a) partial recombinant protein with GST tag. MW of the GST tag alone is 26 KDa.
Sequence:	PLDDYVNTQG ASLFSVTKKQ LGAGSIEECA AKCEEDEEFT CRAFQYHSKE QQCVMIAENR KSSIIIRMRD VVLFKVKVYL SECKTGNGKN YRGTMSKTKN
Clone:	2A10
Isotype:	IgG1
Cross-Reactivity:	Human
Characteristics:	Antibody Reactive Against Recombinant Protein.

Target Details

Target:	PLG
Alternative Name:	PLG (PLG Products)
Background:	Full Gene Name: plasminogen Synonyms: DKFZp779M0222
Gene ID:	5340
Pathways:	Complement System , Lipid Metabolism

Application Details

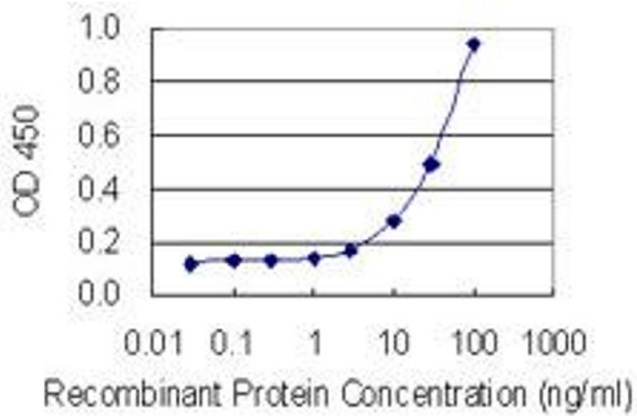
Application Notes:	Optimal working dilution should be determined by the investigator.
Restrictions:	For Research Use only

Handling

Buffer:	In 1x PBS, pH 7.4
Handling Advice:	Aliquot to avoid repeated freezing and thawing.
Storage:	-20 °C
Storage Comment:	Store at -20°C or lower. Aliquot to avoid repeated freezing and thawing.

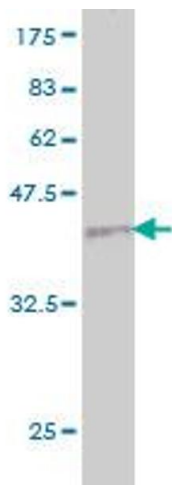
Publications

Product cited in:	Jeon, Jeong, Baek, Koo, Park, Yang, Yu, Kim, Pak: "Network clustering revealed the systemic alterations of mitochondrial protein expression." in: PLoS computational biology , Vol. 7, Issue 6, pp. e1002093, (2011) (PubMed).
-------------------	---



ELISA

Image 1. Detection limit for recombinant GST tagged PLG is 1 ng/ml as a capture antibody.



Western Blotting

Image 2. Western Blot detection against Immunogen (36.63 kDa) .