

Datasheet for ABIN562292
anti-PMS1 antibody (AA 26-135)



[Go to Product page](#)

1 Image

Overview

Quantity:	50 µL
Target:	PMS1
Binding Specificity:	AA 26-135
Reactivity:	Human
Host:	Mouse
Clonality:	Polyclonal
Conjugate:	This PMS1 antibody is un-conjugated
Application:	Western Blotting (WB), ELISA

Product Details

Purpose:	Mouse polyclonal antibody raised against a partial recombinant PMS1.
Immunogen:	PMS1 (NP_000525, 26 a.a. ~ 135 a.a) partial recombinant protein with GST tag.
Sequence:	KELIENSLDA GATSVDVKLE NYGFDKIEVR DNGEGIKAVD APVMAMKYYT SKINSHEDLE NLTTYGFRGE ALGSICCIAE VLITTRTAAD NFSTQYVLDG SGHILSQKPS
Cross-Reactivity:	Human
Characteristics:	Antibody Reactive Against Recombinant Protein.

Target Details

Target:	PMS1
Alternative Name:	PMS1 (PMS1 Products)

Target Details

Background:	Full Gene Name: PMS1 postmeiotic segregation increased 1 (<i>S. cerevisiae</i>) Synonyms: DKFZp781M0253,FLJ98259,HNPCC3,PMSL1,hPMS1
Gene ID:	5378
NCBI Accession:	NM_000534

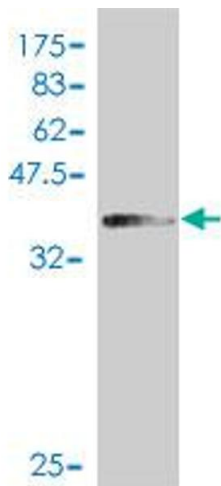
Application Details

Application Notes:	Optimal working dilution should be determined by the investigator.
Restrictions:	For Research Use only

Handling

Format:	Liquid
Buffer:	50 % glycerol
Handling Advice:	Aliquot to avoid repeated freezing and thawing.
Storage:	-20 °C
Storage Comment:	Store at -20°C or lower. Aliquot to avoid repeated freezing and thawing.

Images



Western Blotting

Image 1. Western Blot detection against Immunogen (38.21 kDa).