



[Go to Product page](#)

Datasheet for ABIN562293

## anti-PMS1 antibody (AA 26-135)

### 2 Images

#### Overview

Quantity:	100 µg
Target:	PMS1
Binding Specificity:	AA 26-135
Reactivity:	Human
Host:	Mouse
Clonality:	Monoclonal
Conjugate:	This PMS1 antibody is un-conjugated
Application:	Western Blotting (WB), ELISA

#### Product Details

Purpose:	Mouse monoclonal antibody raised against a partial recombinant PMS1.
Immunogen:	PMS1 (NP_000525, 26 a.a. ~ 135 a.a) partial recombinant protein with GST tag. MW of the GST tag alone is 26 KDa.
Sequence:	KELIENSLDA GATSVDVKLE NYGFDKIEVR DNGEGIKAVD APVMAMKYYT SKINSHEDLE NLTTYGFRGE ALGSICCIAE VLITTRTAAD NFSTQYVLDG SGHILSQKPS
Clone:	2G10
Isotype:	IgG1
Cross-Reactivity:	Human
Characteristics:	Antibody Reactive Against Recombinant Protein.

## Target Details

Target:	PMS1
Alternative Name:	PMS1 ( <a href="#">PMS1 Products</a> )
Background:	Full Gene Name: PMS1 postmeiotic segregation increased 1 ( <i>S. cerevisiae</i> ) Synonyms: DKFZp781M0253,FLJ98259,HNPCC3,PMSL1,hPMS1
Gene ID:	5378
NCBI Accession:	<a href="#">NM_000534</a>

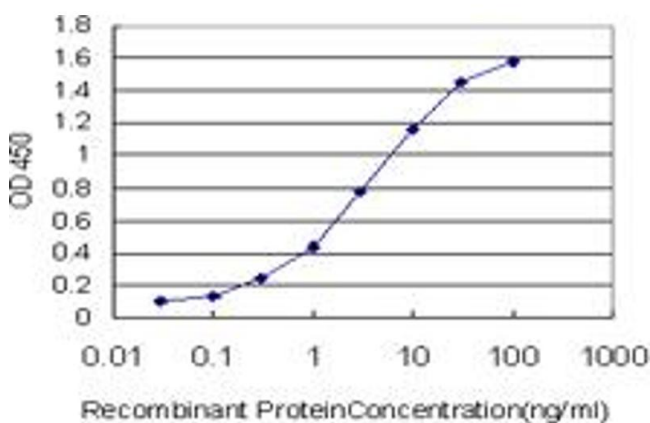
## Application Details

Application Notes:	Optimal working dilution should be determined by the investigator.
Restrictions:	For Research Use only

## Handling

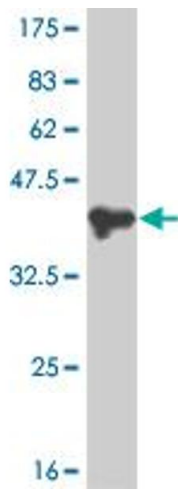
Buffer:	In 1x PBS, pH 7.4
Handling Advice:	Aliquot to avoid repeated freezing and thawing.
Storage:	-20 °C
Storage Comment:	Store at -20°C or lower. Aliquot to avoid repeated freezing and thawing.

## Images



### ELISA

**Image 1.** Detection limit for recombinant GST tagged PMS1 is approximately 0.03ng/ml as a capture antibody.



### Western Blotting

**Image 2.** Western Blot detection against Immunogen (37.84 kDa).