



[Go to Product page](#)

Datasheet for ABIN562299

anti-POLA1 antibody (AA 1363-1462)

1 Image

Overview

Quantity:	50 µL
Target:	POLA1
Binding Specificity:	AA 1363-1462
Reactivity:	Human
Host:	Mouse
Clonality:	Polyclonal
Conjugate:	This POLA1 antibody is un-conjugated
Application:	Western Blotting (WB), ELISA

Product Details

Purpose:	Mouse polyclonal antibody raised against a partial recombinant POLA.
Immunogen:	POLA (NP_058633, 1363 a.a. ~ 1462 a.a) partial recombinant protein with GST tag.
Sequence:	QFSRTGPLCP ACMKATLQPE YSDKSLYTQL CFYRYIFDAE CALEKLTTDH EKDKLKKQFF TPKVLQDYRK LKNTAEQFLS RSGYSEVNLS KLFAGCAVKS
Cross-Reactivity:	Human
Characteristics:	Antibody Reactive Against Recombinant Protein.

Target Details

Target:	POLA1
Alternative Name:	POLA1 (POLA1 Products)

Target Details

Background:	Full Gene Name: polymerase (DNA directed), alpha 1, catalytic subunit Synonyms: DKFZp686K1672,POLA,p180
Gene ID:	5422
NCBI Accession:	NM_016937
Pathways:	SARS-CoV-2 Protein Interactome

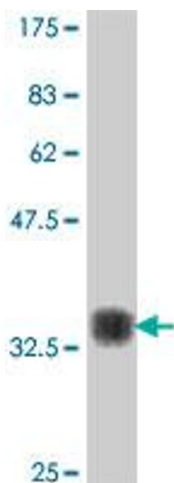
Application Details

Application Notes:	Optimal working dilution should be determined by the investigator.
Restrictions:	For Research Use only

Handling

Format:	Liquid
Buffer:	50 % glycerol
Handling Advice:	Aliquot to avoid repeated freezing and thawing.
Storage:	-20 °C
Storage Comment:	Store at -20°C or lower. Aliquot to avoid repeated freezing and thawing.

Images



Western Blotting

Image 1. Western Blot detection against Immunogen (37.11 kDa).