



[Go to Product page](#)

Datasheet for ABIN562300

## anti-POLA1 antibody (AA 1363-1462)

### 3 Images

#### Overview

Quantity:	100 µg
Target:	POLA1
Binding Specificity:	AA 1363-1462
Reactivity:	Human
Host:	Mouse
Clonality:	Monoclonal
Conjugate:	This POLA1 antibody is un-conjugated
Application:	Western Blotting (WB), ELISA

#### Product Details

Purpose:	Mouse monoclonal antibody raised against a partial recombinant POLA.
Immunogen:	POLA (NP_058633, 1363 a.a. ~ 1462 a.a) partial recombinant protein with GST tag. MW of the GST tag alone is 26 KDa.
Sequence:	QFSRTGPLCP ACMKATLQPE YSDKSLYTQL CFYRYIFDAE CALEKLTTDH EKDKLKKQFF TPKVLQDYRK LKNTAEQFLS RSGYSEVNLS KLFAGCAVKS
Clone:	3C11
Isotype:	IgG2a
Cross-Reactivity:	Human
Characteristics:	Antibody Reactive Against Recombinant Protein.

## Target Details

Target:	POLA1
Alternative Name:	POLA1 ( <a href="#">POLA1 Products</a> )
Background:	Full Gene Name: polymerase (DNA directed), alpha 1, catalytic subunit Synonyms: DKFZp686K1672,POLA,p180
Gene ID:	5422
NCBI Accession:	<a href="#">NM_016937</a>
Pathways:	<a href="#">SARS-CoV-2 Protein Interactome</a>

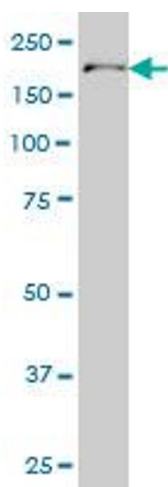
## Application Details

Application Notes:	Optimal working dilution should be determined by the investigator.
Restrictions:	For Research Use only

## Handling

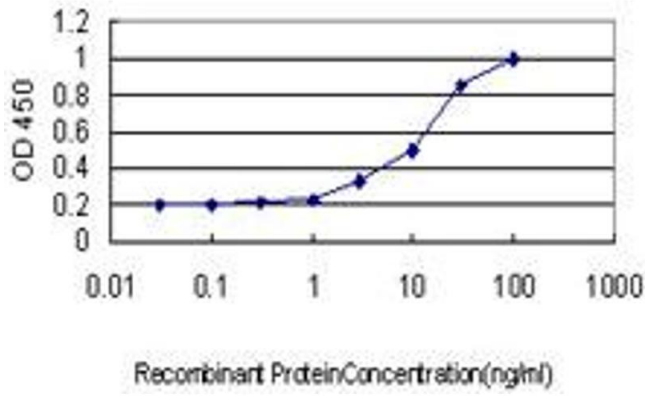
Buffer:	In 1x PBS, pH 7.4
Handling Advice:	Aliquot to avoid repeated freezing and thawing.
Storage:	-20 °C
Storage Comment:	Store at -20°C or lower. Aliquot to avoid repeated freezing and thawing.

## Images



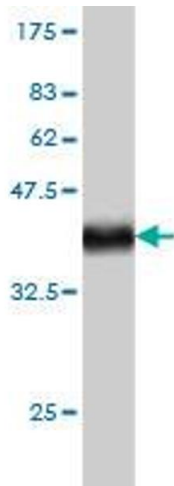
### Western Blotting

**Image 1.** POLA monoclonal antibody (M01), clone 3C11  
Western Blot analysis of POLA expression in Hela S3 NE .



### ELISA

**Image 2.** Detection limit for recombinant GST tagged POLA is approximately 0.3ng/ml as a capture antibody.



### Western Blotting

**Image 3.** Western Blot detection against Immunogen (36.74 kDa).