



[Go to Product page](#)

Datasheet for ABIN562306  
**anti-POLR2D antibody (AA 1-142)**

1 Image

Overview

Quantity:	50 µL
Target:	POLR2D
Binding Specificity:	AA 1-142
Reactivity:	Human
Host:	Mouse
Clonality:	Polyclonal
Conjugate:	This POLR2D antibody is un-conjugated
Application:	Western Blotting (WB), ELISA

Product Details

Purpose:	Mouse polyclonal antibody raised against a full-length recombinant POLR2D.
Immunogen:	POLR2D (AAH17205, 1 a.a. ~ 142 a.a) full-length recombinant protein with GST tag.
Sequence:	MAAGGSDPRA GDVEEDASQL IFPKGFTAE TLLNSEVHML LEHRKQQNES AEDEQELSEV FMKTLNYTAR FSRFKNRETI ASVRSLLLQK KLHKFELACL ANLCPETAEE SKALIPSLEG RFEDEELQQI LDDIQTGRSF QY
Cross-Reactivity:	Human
Characteristics:	Antibody Reactive Against Recombinant Protein.

Target Details

Target:	POLR2D
---------	--------

## Target Details

Alternative Name:	POLR2D ( <a href="#">POLR2D Products</a> )
Background:	Full Gene Name: polymerase (RNA) II (DNA directed) polypeptide D Synonyms: HSRBP4,HSRPB4,RBP4
Gene ID:	5433
Pathways:	<a href="#">Regulatory RNA Pathways</a>

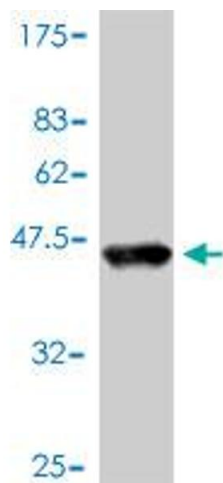
## Application Details

Application Notes:	Optimal working dilution should be determined by the investigator.
Restrictions:	For Research Use only

## Handling

Format:	Liquid
Buffer:	50 % glycerol
Handling Advice:	Aliquot to avoid repeated freezing and thawing.
Storage:	-20 °C
Storage Comment:	Store at -20°C or lower. Aliquot to avoid repeated freezing and thawing.

## Images



### Western Blotting

**Image 1.** Western Blot detection against Immunogen (41.73 KDa) .