



Datasheet for ABIN562372  
**anti-PRKACG antibody (AA 1-351)**



[Go to Product page](#)

1 Image

1 Publication

### Overview

Quantity:	50 µL
Target:	PRKACG
Binding Specificity:	AA 1-351
Reactivity:	Human
Host:	Mouse
Clonality:	Polyclonal
Conjugate:	This PRKACG antibody is un-conjugated
Application:	Western Blotting (WB), ELISA

### Product Details

Purpose:	Mouse polyclonal antibody raised against a full-length recombinant PRKACG.
Immunogen:	PRKACG (AAH39888, 1 a.a. ~ 351 a.a) full-length recombinant protein with GST tag.
Sequence:	MGNAPAKKDT EQEESVNEFL AKARGDFLYR WGNPAQNTAS SDQFERLRTL GMGSFGRVML VRHQETGGHY AMKILNKQKV VKMKQVEHIL NEKRILQAID FPFLVKLQFS FKDNSYLYLV MEYVPGGEMF SRLQRVGRFS EPHACFYAAQ VVLAVQYLHS LDLIHRDLKP ENLLIDQQGY LQVTDGFGFAK RVKGRTWTLC GTPEYLAPEI ILSKGYNKAV DWWALGVLIY EMAVGFPFFY ADQPIQIYEK IVSGRVRFPS KLSSDLKHL RSLQVDLTK RFGNLRNGVG DIKNHKWFAT TSWIAIYEKK VEAPFIPKYT GPGDASNFD YEEELRISI NEKCPKEFSE F
Cross-Reactivity:	Human
Characteristics:	Antibody Reactive Against Recombinant Protein.

## Target Details

---

Target:	PRKACG
Alternative Name:	PRKACG ( <a href="#">PRKACG Products</a> )
Background:	Full Gene Name: protein kinase, cAMP-dependent, catalytic, gamma Synonyms: KAPG,PKACg
Gene ID:	5568
Pathways:	<a href="#">AMPK Signaling</a> , <a href="#">Hedgehog Signaling</a> , <a href="#">Thyroid Hormone Synthesis</a> , <a href="#">G-protein mediated Events</a> , <a href="#">Interaction of EGFR with phospholipase C-gamma</a> , <a href="#">Lipid Metabolism</a>

## Application Details

---

Application Notes:	Optimal working dilution should be determined by the investigator.
Restrictions:	For Research Use only

## Handling

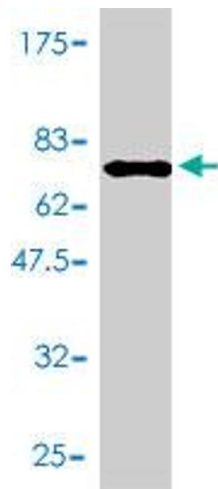
---

Format:	Liquid
Buffer:	50 % glycerol
Handling Advice:	Aliquot to avoid repeated freezing and thawing.
Storage:	-20 °C
Storage Comment:	Store at -20°C or lower. Aliquot to avoid repeated freezing and thawing.

## Publications

---

Product cited in:	Adachi, Kano, Saido, Murata: "Visual screening and analysis for kinase-regulated membrane trafficking pathways that are involved in extensive beta-amyloid secretion." in: <b>Genes to cells : devoted to molecular &amp; cellular mechanisms</b> , Vol. 14, Issue 3, pp. 355-69, (2009) ( <a href="#">PubMed</a> ).
-------------------	--



### Western Blotting

**Image 1.** Western Blot detection against Immunogen (64.72 KDa) .