

Datasheet for ABIN562379
anti-PKC alpha antibody (AA 563-672)

6 Images

[Go to Product page](#)

Overview

Quantity:	100 µg
Target:	PKC alpha (PKCa)
Binding Specificity:	AA 563-672
Reactivity:	Human
Host:	Mouse
Clonality:	Monoclonal
Conjugate:	This PKC alpha antibody is un-conjugated
Application:	Western Blotting (WB), ELISA, Immunohistochemistry (Paraffin-embedded Sections) (IHC (p)), Immunofluorescence (IF), Proximity Ligation Assay (PLA)

Product Details

Purpose:	Mouse monoclonal antibody raised against a partial recombinant PRKCA.
Immunogen:	PRKCA (NP_002728, 563 a.a. ~ 672 a.a) partial recombinant protein with GST tag. MW of the GST tag alone is 26 KDa.
Sequence:	KEAVSICKGL MTKHPAKRLG CGPEGERDVR EHAFRRIDW EKLENREIQP PFKPKVCGKG AENFDKFFTR GQPVLTPPDQ LVIANIDQSD FEGFSYVNPQ FVHPILQSAV
Clone:	2F11
Isotype:	IgG1
Cross-Reactivity:	Human
Characteristics:	Antibody Reactive Against Recombinant Protein.

Target Details

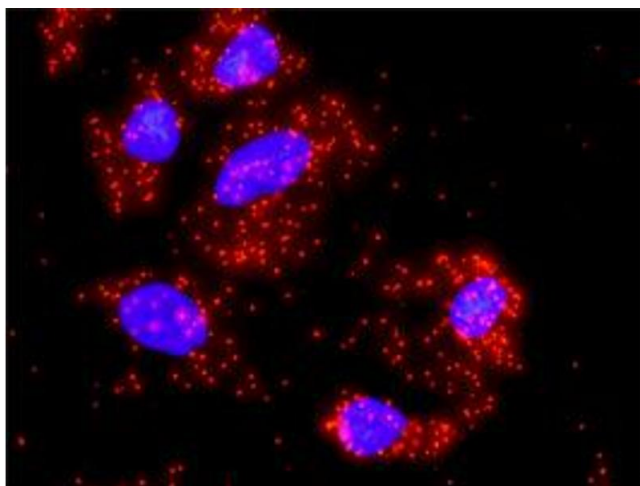
Target:	PKC alpha (PKCa)
Alternative Name:	PRKCA (PKCa Products)
Background:	Full Gene Name: protein kinase C, alpha Synonyms: AAG6,MGC129900,MGC129901,PKC-alpha,PKCA,PRKACA
Gene ID:	5578
NCBI Accession:	NM_002737
Pathways:	WNT Signaling , TCR Signaling , EGFR Signaling Pathway , Neurotrophin Signaling Pathway , Thyroid Hormone Synthesis , cAMP Metabolic Process , Myometrial Relaxation and Contraction , Cell-Cell Junction Organization , Regulation of G-Protein Coupled Receptor Protein Signaling , G-protein mediated Events , Signaling Events mediated by VEGFR1 and VEGFR2 , Interaction of EGFR with phospholipase C-gamma , Thromboxane A2 Receptor Signaling , VEGFR1 Specific Signals , VEGF Signaling

Application Details

Application Notes:	Optimal working dilution should be determined by the investigator.
Restrictions:	For Research Use only

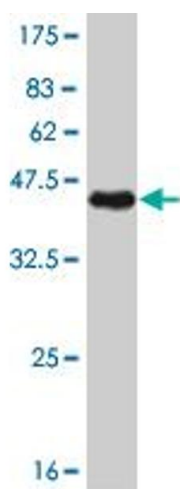
Handling

Buffer:	In 1x PBS, pH 7.4
Handling Advice:	Aliquot to avoid repeated freezing and thawing.
Storage:	-20 °C
Storage Comment:	Store at -20°C or lower. Aliquot to avoid repeated freezing and thawing.



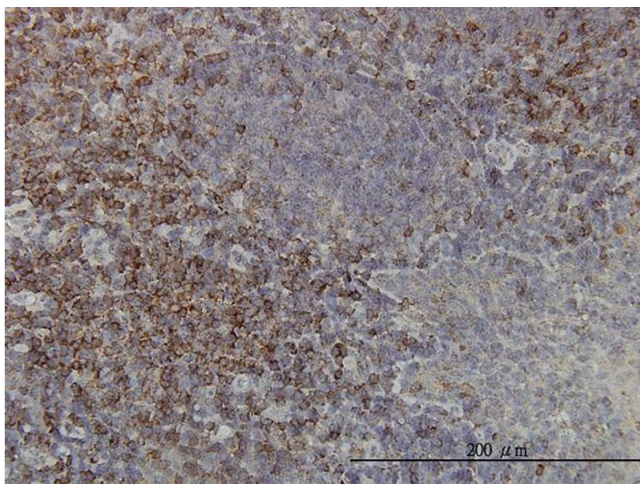
Proximity Ligation Assay

Image 1. Proximity Ligation Analysis of protein-protein interactions between FAS and PRKCA. HeLa cells were stained with anti-FAS rabbit purified polyclonal 1:1200 and anti-PRKCA mouse monoclonal antibody 1:50. Each red dot represents the detection of protein-protein interaction complex, and nuclei were counterstained with DAPI (blue).



Western Blotting

Image 2. Western Blot detection against Immunogen (37.84 kDa) .



Immunostaining

Image 3. Immunoperoxidase of monoclonal antibody to PRKCA on formalin-fixed paraffin-embedded human tonsil. [antibody concentration 1 ug/ml]

Please check the [product details page](#) for more images. Overall 6 images are available for ABIN562379.