



Datasheet for ABIN562389
anti-PKC eta antibody (AA 1-100)



[Go to Product page](#)

3 Images

Overview

Quantity:	50 µL
Target:	PKC eta (PRKCH)
Binding Specificity:	AA 1-100
Reactivity:	Human
Host:	Mouse
Clonality:	Polyclonal
Conjugate:	This PKC eta antibody is un-conjugated
Application:	Western Blotting (WB), ELISA

Product Details

Purpose:	Mouse polyclonal antibody raised against a partial recombinant PRKCH.
Immunogen:	PRKCH (NP_006246, 1 a.a. ~ 100 a.a) partial recombinant protein with GST tag.
Sequence:	MSSGTMKFNG YLRVRIGEAV GLQPTRWSLR HSLFKKGHQL LDPYLTVSVD QVRVGQTSTK QKTNKPTYNE EFCANVTDGG HLELAVFHET PLGYDHFVAN
Cross-Reactivity:	Human
Characteristics:	Antibody Reactive Against Recombinant Protein.

Target Details

Target:	PKC eta (PRKCH)
Alternative Name:	PRKCH (PRKCH Products)

Target Details

Background:	Full Gene Name: protein kinase C, eta Synonyms: MGC26269,MGC5363,PKC-L,PKCL,PRKCL,nPKC-eta
Gene ID:	5583
NCBI Accession:	NM_006255
Pathways:	Myometrial Relaxation and Contraction, Thromboxane A2 Receptor Signaling

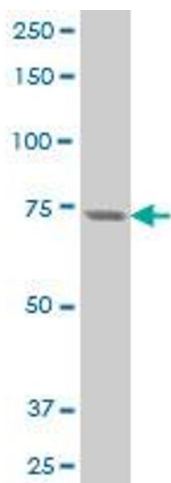
Application Details

Application Notes:	Optimal working dilution should be determined by the investigator.
Restrictions:	For Research Use only

Handling

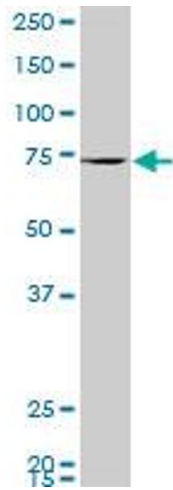
Format:	Liquid
Buffer:	50 % glycerol
Handling Advice:	Aliquot to avoid repeated freezing and thawing.
Storage:	-20 °C
Storage Comment:	Store at -20°C or lower. Aliquot to avoid repeated freezing and thawing.

Images



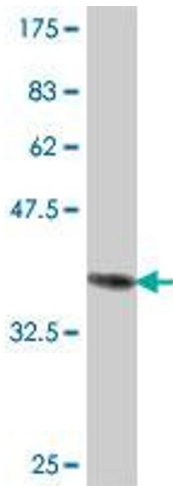
Western Blotting

Image 1. PRKCH polyclonal antibody (A02), Lot # 051128JC01 Western Blot analysis of PRKCH expression in A-431 .



Western Blotting

Image 2. PRKCH polyclonal antibody (A02), Lot # 060803QCS1. Western Blot analysis of PRKCH expression in HL-60.



Western Blotting

Image 3. Western Blot detection against Immunogen (37.11 kDa).