



[Go to Product page](#)

Datasheet for ABIN562391
anti-PKC iota antibody (AA 1-587)

5 Images

Overview

| | |
|----------------------|--|
| Quantity: | 100 µg |
| Target: | PKC iota (PRKCI) |
| Binding Specificity: | AA 1-587 |
| Reactivity: | Human |
| Host: | Mouse |
| Clonality: | Monoclonal |
| Conjugate: | This PKC iota antibody is un-conjugated |
| Application: | Western Blotting (WB), ELISA, Immunofluorescence (IF), RNA Interference (RNAi) |

Product Details

| | |
|------------|---|
| Purpose: | Mouse monoclonal antibody raised against a full length recombinant PRKCI. |
| Immunogen: | PRKCI (AAH22016, 1 a.a. ~ 587 a.a) full-length recombinant protein with GST tag. MW of the GST tag alone is 26 KDa. |
| Sequence: | MSHTVAGGGS GDHSHQVRVK AYYRGDIMIT HFEPSISFEG LCNEVRDMCS FDNEQLFTMK WIDEEGDPCT VSSQLELEEA FRLYELNKDS ELLIHVFPCV PERPGMPCPG EDKSIYRRGA RRWRKLYCAN GHTFQAKRFN RRAHCAICTD RIWGLGRQGY KCINCKLLVH KKCHKLVITIE CGRHSLPQEP VMPMDQSSMH SDHAQTVIPY NPSSHESLDQ VGEEKEAMNT RESGKASSSL GLQDFDLLRV IGRGSYAKVL LVRLKKTDRY YAMKVVKEL VNDDEDIDWV QTEKHVFEQA SNHPFLVGLH SCFQTESRLF FVIEYVNGGD LMFHMQRQRK LPEEHARFYS AEISLALNYL HERGIYRDL KLDNVLLDSE GHIKLTGYGM CKEGLRPGDT TSTFCGTPNY IAPEILRGED YGFSVDWWAL GVLMFEMMAG RSPFDIVGSS DNPDQNTEDY LFQVILEKQI RIPRSMSVKA ASVLKSFLNK DPKERLGCLP QTGFADIQGH PFFRNVDWDM MEQKQVPPF KPNISGEFGL |

Product Details

DNFDSQFTNE RVQLTPDDDD IVRKIDQSEF EGFYINPLL MSAEECV

Clone: 1G11

Isotype: IgG1

Cross-Reactivity: Human

Characteristics: Antibody Reactive Against Recombinant Protein.

Target Details

Target: PKC iota (PRKCI)

Alternative Name: PRKCI ([PRKCI Products](#))

Background: Full Gene Name: protein kinase C, iota
Synonyms: DXS1179E,MGC26534,PKCI,nPKC-iota

Gene ID: 5584

Pathways: [Neurotrophin Signaling Pathway](#), [Cell-Cell Junction Organization](#), [Tube Formation](#)

Application Details

Application Notes: Optimal working dilution should be determined by the investigator.

Restrictions: For Research Use only

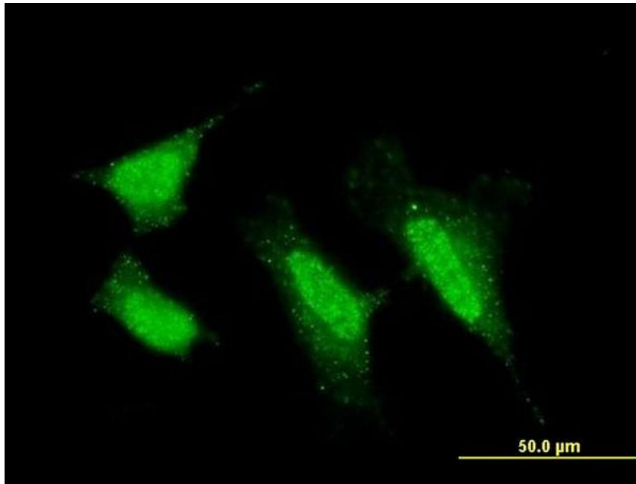
Handling

Buffer: In 1x PBS, pH 7.4

Handling Advice: Aliquot to avoid repeated freezing and thawing.

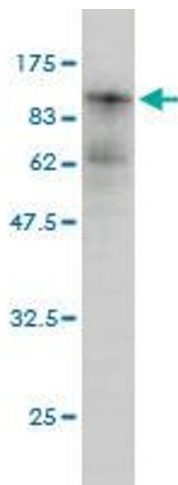
Storage: -20 °C

Storage Comment: Store at -20°C or lower. Aliquot to avoid repeated freezing and thawing.



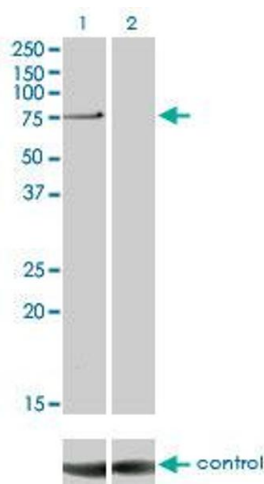
Immunofluorescence

Image 1. Immunofluorescence of monoclonal antibody to PRKCI on HeLa cell. [antibody concentration 10 ug/ml]



Western Blotting

Image 2. Western Blot detection against Immunogen (90.31 KDa) .



Western Blotting

Image 3. Western blot analysis of PRKCI over-expressed 293 cell line, cotransfected with PRKCI Validated Chimera RNAi (Lane 2) or non-transfected control (Lane 1). Blot probed with PRKCI monoclonal antibody (M01) clone 1G11. GAPDH (36.1 kDa) used as specificity and loading control.

Please check the [product details page](#) for more images. Overall 5 images are available for ABIN562391.