

Datasheet for ABIN562409
anti-MAPK6 antibody (AA 612-721)[Go to Product page](#)

6 Images

Overview

Quantity:	100 µg
Target:	MAPK6
Binding Specificity:	AA 612-721
Reactivity:	Human
Host:	Mouse
Clonality:	Monoclonal
Conjugate:	This MAPK6 antibody is un-conjugated
Application:	Western Blotting (WB), ELISA, Immunofluorescence (IF), RNA Interference (RNAi)

Product Details

Purpose:	Mouse monoclonal antibody raised against a partial recombinant MAPK6.
Immunogen:	MAPK6 (AAH35492, 612 a.a. ~ 721 a.a) partial recombinant protein with GST tag. MW of the GST tag alone is 26 KDa.
Sequence:	EVRKDEQVEK ENTYTSYLDK FFSRKEDTEM LETEPVEDGK LGERGHEEGF LNNSGEFLFN KQLESIGIPQ FHSPVGSPLK SIQATLTPSA MKSSPQIPHQ TYSSILKHLN
Clone:	1G6
Isotype:	IgG2a
Cross-Reactivity:	Human
Characteristics:	Antibody Reactive Against Recombinant Protein.

Target Details

Target:	MAPK6
Alternative Name:	MAPK6 (MAPK6 Products)
Background:	Full Gene Name: mitogen-activated protein kinase 6 Synonyms: DKFZp686F03189,ERK3,HsT17250,PRKM6,p97MAPK
Gene ID:	5597
Pathways:	MAPK Signaling , Neurotrophin Signaling Pathway , Regulation of Muscle Cell Differentiation , Hepatitis C

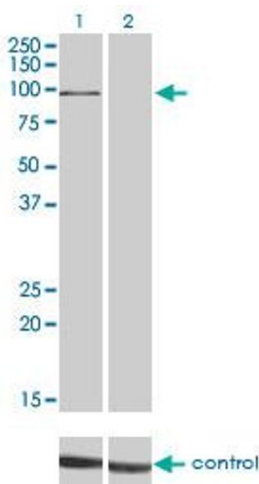
Application Details

Application Notes:	Optimal working dilution should be determined by the investigator.
Restrictions:	For Research Use only

Handling

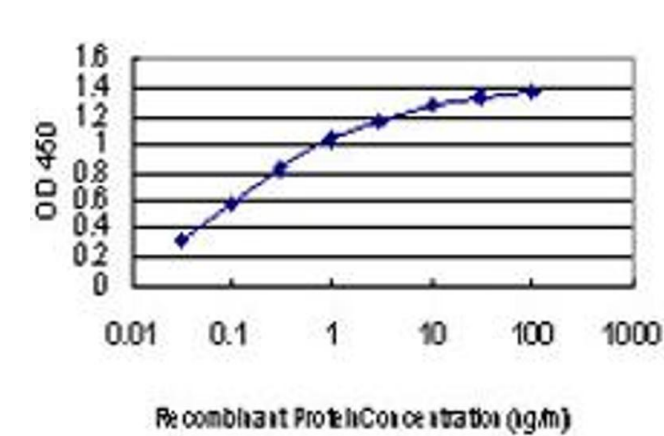
Buffer:	In 1x PBS, pH 7.4
Handling Advice:	Aliquot to avoid repeated freezing and thawing.
Storage:	-20 °C
Storage Comment:	Store at -20°C or lower. Aliquot to avoid repeated freezing and thawing.

Images



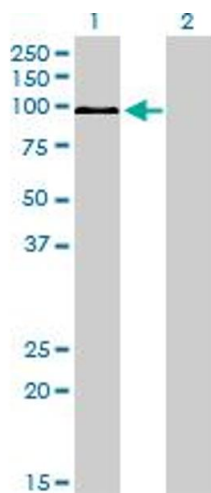
Western Blotting

Image 1. Western blot analysis of MAPK6 over-expressed 293 cell line, cotransfected with MAPK6 Validated Chimera RNAi (Lane 2) or non-transfected control (Lane 1). Blot probed with MAPK6 monoclonal antibody (M01) clone 1G6. GAPDH (36.1 kDa) used as specificity and loading control.



ELISA

Image 2. Detection limit for recombinant GST tagged MAPK6 is approximately 0.03ng/ml as a capture antibody.



Western Blotting

Image 3. Western Blot analysis of MAPK6 expression in transfected 293T cell line by MAPK6 monoclonal antibody (M01), clone 1G6.

Lane 1: MAPK6 transfected lysate(82.7 KDa).

Lane 2: Non-transfected lysate.

Please check the [product details page](#) for more images. Overall 6 images are available for ABIN562409.