



[Go to Product page](#)

Datasheet for ABIN562433  
**anti-MAP2K5 antibody (AA 1-120)**

4 Images

Overview

Quantity:	100 µg
Target:	MAP2K5
Binding Specificity:	AA 1-120
Reactivity:	Human
Host:	Mouse
Clonality:	Monoclonal
Conjugate:	This MAP2K5 antibody is un-conjugated
Application:	Western Blotting (WB), ELISA, Immunofluorescence (IF)

Product Details

Purpose:	Mouse monoclonal antibody raised against a partial recombinant MAP2K5.
Immunogen:	MAP2K5 (AAH08838, 1 a.a. ~ 120 a.a) partial recombinant protein with GST tag. MW of the GST tag alone is 26 KDa.
Sequence:	MLWLALGPFPP AMENQVLVIR IKIPNSGAVD WTVHSGPQLL FRDVLDVIGQ VLPEATTTAF EYEDGDGRI TVRSDEEMKA MLSYYYSTVM EQQVNGQLIE PLQIFPRACK PPGERNIHGL
Clone:	1B4
Isotype:	IgG1
Cross-Reactivity:	Human
Characteristics:	Antibody Reactive Against Recombinant Protein.

## Target Details

Target:	MAP2K5
Alternative Name:	MAP2K5 ( <a href="#">MAP2K5 Products</a> )
Background:	Full Gene Name: mitogen-activated protein kinase kinase 5 Synonyms: HsT17454,MAPKK5,MEK5,PRKMK5
Gene ID:	5607
Pathways:	<a href="#">MAPK Signaling</a> , <a href="#">Neurotrophin Signaling Pathway</a>

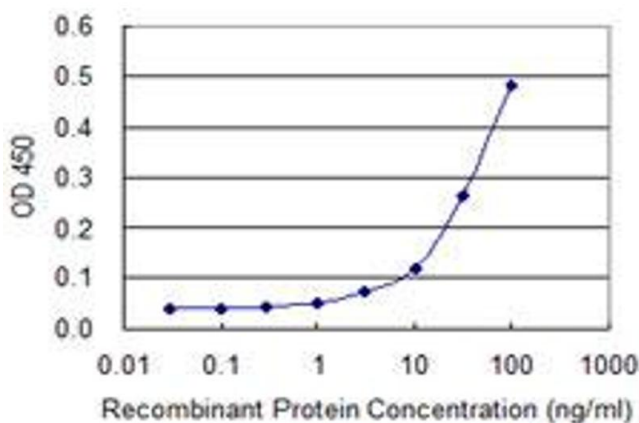
## Application Details

Application Notes:	Optimal working dilution should be determined by the investigator.
Restrictions:	For Research Use only

## Handling

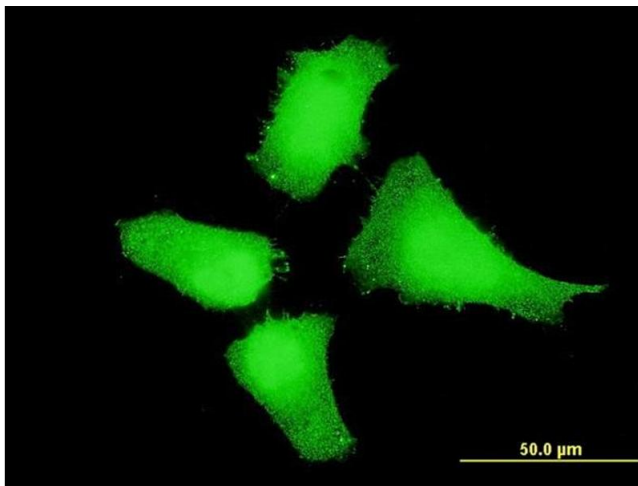
Buffer:	In 1x PBS, pH 7.4
Handling Advice:	Aliquot to avoid repeated freezing and thawing.
Storage:	-20 °C
Storage Comment:	Store at -20°C or lower. Aliquot to avoid repeated freezing and thawing.

## Images



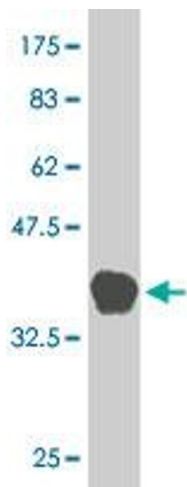
### ELISA

**Image 1.** Detection limit for recombinant GST tagged MAP2K5 is approximately 10ng/ml as a capture antibody.



### Immunofluorescence

**Image 2.** Immunofluorescence of monoclonal antibody to MAP2K5 on HeLa cell. [antibody concentration 10 ug/ml]



### Western Blotting

**Image 3.** Western Blot detection against Immunogen (38.83 kDa).

Please check the [product details page](#) for more images. Overall 4 images are available for ABIN562433.