

Datasheet for ABIN562438  
**anti-MAP2K7 antibody (AA 1-99)**

## 5 Images

[Go to Product page](#)

## Overview

Quantity:	100 µg
Target:	MAP2K7
Binding Specificity:	AA 1-99
Reactivity:	Human
Host:	Mouse
Clonality:	Monoclonal
Conjugate:	This MAP2K7 antibody is un-conjugated
Application:	Western Blotting (WB), ELISA, Immunofluorescence (IF), Immunohistochemistry (Paraffin-embedded Sections) (IHC (p)), Proximity Ligation Assay (PLA)

## Product Details

Purpose:	Mouse monoclonal antibody raised against a partial recombinant MAP2K7.
Immunogen:	MAP2K7 (NP_660186, 1 a.a. ~ 99 a.a) partial recombinant protein with GST tag. MW of the GST tag alone is 26 KDa.
Sequence:	MAASSLEQKL SRLEAKLKQE NREARRRIDL NLDISPQRPR PTLQLPLAND GGSRSPPSES SPQHPTPPAR PRHMLGLPST LFTPRSMESI EIDQKLQEI
Clone:	2G5
Isotype:	IgG1
Cross-Reactivity:	Human
Characteristics:	Antibody Reactive Against Recombinant Protein.

## Target Details

Target:	MAP2K7
Alternative Name:	MAP2K7 ( <a href="#">MAP2K7 Products</a> )
Background:	Full Gene Name: mitogen-activated protein kinase kinase 7 Synonyms: Jnk2,MAPKK7,MKK7,PRKMK7
Gene ID:	5609
NCBI Accession:	<a href="#">NM_145185</a>
Pathways:	<a href="#">MAPK Signaling</a> , <a href="#">TLR Signaling</a> , <a href="#">Fc-epsilon Receptor Signaling Pathway</a> , <a href="#">Activation of Innate immune Response</a> , <a href="#">Toll-Like Receptors Cascades</a> , <a href="#">BCR Signaling</a>

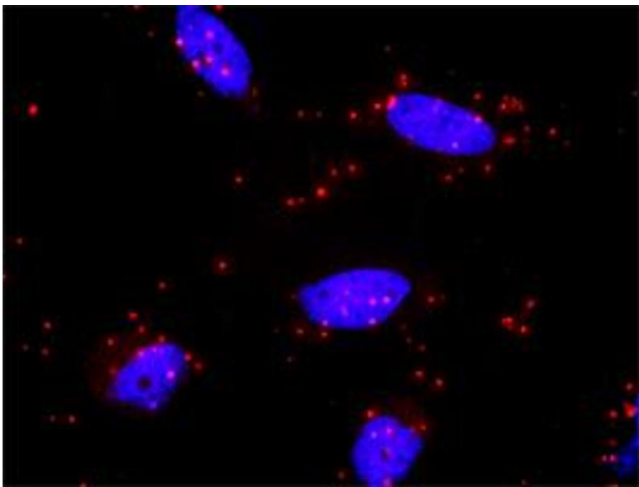
## Application Details

Application Notes:	Optimal working dilution should be determined by the investigator.
Restrictions:	For Research Use only

## Handling

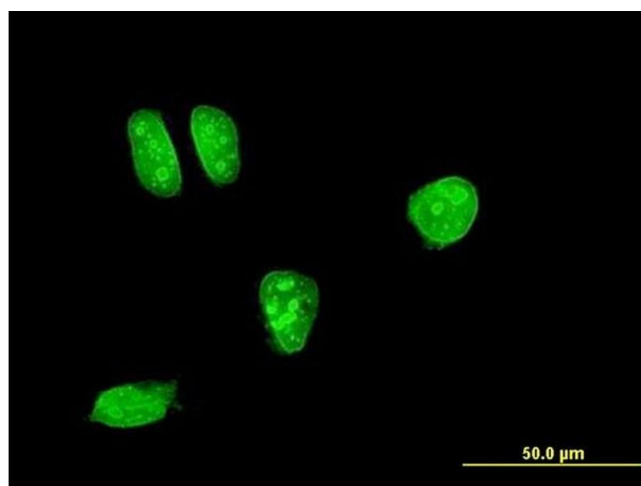
Buffer:	In 1x PBS, pH 7.4
Handling Advice:	Aliquot to avoid repeated freezing and thawing.
Storage:	-20 °C
Storage Comment:	Store at -20°C or lower. Aliquot to avoid repeated freezing and thawing.

## Images



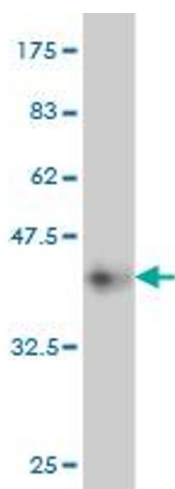
### Proximity Ligation Assay

**Image 1.** Proximity Ligation Analysis of protein-protein interactions between MAPK8 and MAP2K7. HeLa cells were stained with anti-MAPK8 rabbit purified polyclonal 1:1200 and anti-MAP2K7 mouse monoclonal antibody 1:50. Each red dot represents the detection of protein-protein interaction complex, and nuclei were counterstained with DAPI (blue).



#### Immunofluorescence

**Image 2.** Immunofluorescence of monoclonal antibody to MAP2K7 on HeLa cell. [antibody concentration 10 ug/ml]



#### Western Blotting

**Image 3.** Western Blot detection against Immunogen (36.63 kDa) .

Please check the [product details page](#) for more images. Overall 5 images are available for ABIN562438.