



[Go to Product page](#)

Datasheet for ABIN562457  
**anti-PRSS1 antibody (AA 138-247)**

1 Image

Overview

Quantity:	50 µL
Target:	PRSS1
Binding Specificity:	AA 138-247
Reactivity:	Human
Host:	Mouse
Clonality:	Polyclonal
Conjugate:	This PRSS1 antibody is un-conjugated
Application:	Western Blotting (WB), ELISA

Product Details

Purpose:	Mouse polyclonal antibody raised against a partial recombinant PRSS1.
Immunogen:	PRSS1 (NP_002760, 138 a.a. ~ 247 a.a) partial recombinant protein with GST tag.
Sequence:	KCLISGWGNT ASSGADYPDE LQCLDAPVLS QAKCEASYPG KITSNMFCVG FLEGGKDSCQ GDSGGPVVCN GQLQGVVSWG DGCAQKNKPG VYTKVYNYVK WIKNTIAANS
Cross-Reactivity:	Human
Characteristics:	Antibody Reactive Against Recombinant Protein.

Target Details

Target:	PRSS1
Alternative Name:	PRSS1 ( <a href="#">PRSS1 Products</a> )

## Target Details

Background:	Full Gene Name: protease, serine, 1 (trypsin 1) Synonyms: MGC120175,MGC149362,TRP1,TRY1,TRY4,TRYP1
Gene ID:	5644
NCBI Accession:	<a href="#">NM_002769</a>

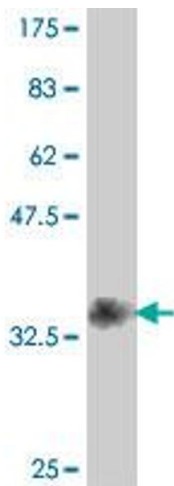
## Application Details

Application Notes:	Optimal working dilution should be determined by the investigator.
Restrictions:	For Research Use only

## Handling

Format:	Liquid
Buffer:	50 % glycerol
Handling Advice:	Aliquot to avoid repeated freezing and thawing.
Storage:	-20 °C
Storage Comment:	Store at -20°C or lower. Aliquot to avoid repeated freezing and thawing.

## Images



### Western Blotting

**Image 1.** Western Blot detection against Immunogen (38.21 kDa).