

Datasheet for ABIN5624584

**CRASP-1 Protein****1** Image[Go to Product page](#)

## Overview

Quantity:	100 µg
Target:	CRASP-1
Origin:	Borrelia burgdorferi
Source:	Escherichia coli (E. coli)
Protein Type:	Recombinant
Application:	ELISA, Western Blotting (WB)

## Product Details

Purification:	Crasp1 is a fusion protein with an MBP tag and was expressed in E.coli. Analysis by SDS-PAGE resulted in a pattern consistent with purified Crasp1 and was estimated to be greater than 95% pure.
Sterility:	Sterile filtered

## Target Details

Target:	CRASP-1
Alternative Name:	Crasp1
Gene ID:	1194383
UniProt:	<a href="#">Q66ZC1</a>

## Application Details

Application Notes:	Application Note: Crasp1 is suitable as a control in immunological assays. Specific conditions
--------------------	--

## Application Details

for reactivity should be optimized by the end user. Expect bands at 69.3 kDa for CRASP-1-MBP, (26.9 kDa for CRASP-1 and 42.4 kDa for MBP) in size corresponding to Crasp1 by Western blotting in the appropriate cell lysate or extract.

Western Blot Dilution: User Optimized

ELISA Dilution: User Optimized

Restrictions: For Research Use only

## Handling

Format: Liquid

Concentration: 1.0 mg/mL

Buffer: 0.02 M Potassium Phosphate, 0.15 M Sodium Chloride, pH 7.2

Stabilizer: None

Preservative: Sodium azide

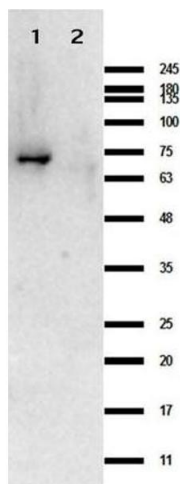
Precaution of Use: This product contains Sodium azide: a POISONOUS AND HAZARDOUS SUBSTANCE which should be handled by trained staff only.

Storage: -20 °C

Storage Comment: Store vial at -20° C prior to opening. Aliquot contents and freeze at -20° C or below for extended storage. Avoid cycles of freezing and thawing. Centrifuge product if not completely clear after standing at room temperature. Dilute only prior to immediate use.

Expiry Date: 6 months

## Images



### Western Blotting

**Image 1.** Western Blot results of Rabbit Anti-Crasp-1 Antibody. Lane 1: Crasp 1 protein. Lane 2: MBP. Load: 0.05  $\mu$ L. Primary Antibody: Rabbit Anti-Crasp-1 Antibody at 1.0mg/mL overnight at 4°C. Secondary Antibody: Goat anti-Rabbit (p/m 611-101-122) at 1:70,000 for 30 min at RT. Blocking: BlockOut Buffer for 30min at RT. Expect: ~63.9kDa.