

Datasheet for ABIN5624615

**MEK2 Protein****1** Image[Go to Product page](#)

## Overview

Quantity:	10 µg
Target:	MEK2 (MAP2K2)
Origin:	Human, Mouse, Rat
Source:	Insect cells (Sf9)
Protein Type:	Recombinant
Application:	Western Blotting (WB)

## Product Details

Purification:	MEK2 is a recombinant protein containing a polyhistidine tag expressed in Sf9. Analysis by SDS-PAGE resulted in a pattern consistent with purified MEK2 and was estimated to be greater than 95% pure.
Sterility:	Sterile filtered

## Target Details

Target:	MEK2 (MAP2K2)
Alternative Name:	MEK2 ( <a href="#">MAP2K2 Products</a> )
UniProt:	<a href="#">P36507</a>
Pathways:	<a href="#">MAPK Signaling</a> , <a href="#">RTK Signaling</a> , <a href="#">Fc-epsilon Receptor Signaling Pathway</a> , <a href="#">Neurotrophin Signaling Pathway</a> , <a href="#">Activation of Innate immune Response</a> , <a href="#">Toll-Like Receptors Cascades</a> , <a href="#">Signaling of Hepatocyte Growth Factor Receptor</a> , <a href="#">BCR Signaling</a>

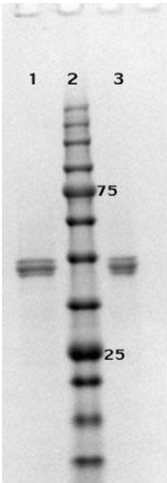
Application Details

Application Notes:	Application Note: MEK2 is suitable as a control for polyclonal or monoclonal anti-MEK1 in immunological assays. For western blot use at 50 ng or less. For other assays concentration is user optimized.  Western Blot Dilution: 50 ng
Restrictions:	For Research Use only

Handling

Format:	Liquid
Buffer:	Stabilizer: None
Storage:	4 °C,-20 °C
Storage Comment:	Store vial at -20° C prior to opening. This product is stable at 4° C as an undiluted liquid. For extended storage, aliquot contents and freeze at -20° C or below. Avoid cycles of freezing and thawing. Dilute only prior to immediate use.
Expiry Date:	12 months

Images



**SDS-PAGE**

**Image 1.** SDS-PAGE results of MEK2 Recombinant Protein. Lane 1: reduced MEK2 protein. Lane 2: Opal Prestained Molecular Weight Ladder . Lane 3: non-reduced MEK2 protein. Load: 1µg. 4-20% Lonza SDS-PAGE; Coomassie Stained; BioRad ChemiDoc Imaged.