

Datasheet for ABIN5624620

PARP1 Protein (Internal Region)**2** Images[Go to Product page](#)

Overview

Quantity:	25 µg
Target:	PARP1
Protein Characteristics:	Internal Region
Origin:	Human
Source:	Escherichia coli (E. coli)
Application:	Control (Ct)

Product Details

Purification:	PARP1 (internal) is a N-terminus His-Tag recombinant protein expressed in E.coli that includes the human PARP1 automodification domain and the Breast Cancer Suppressor Protein (BRCA1), carboxy-terminal domain . Analysis by SDS-PAGE and Coomassie staining resulted in ~19 kDa MW band and estimated purity ≥95%.
Sterility:	Sterile filtered

Target Details

Target:	PARP1
Alternative Name:	PARP1 (PARP1 Products)
UniProt:	P09874
Pathways:	Apoptosis , Caspase Cascade in Apoptosis , DNA Damage Repair , Production of Molecular Mediator of Immune Response , Maintenance of Protein Location

Application Details

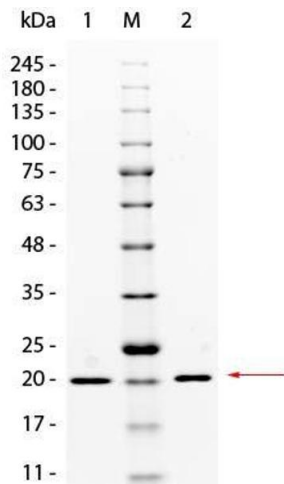
Application Notes: Application Note: PARP1 (internal) is suitable as a control for immunological assays that use Anti-PARP1 (internal) (RABBIT) Antibody - 200-401-X51. Specific conditions for reactivity should be optimized by the end user. Expect a band approximately 20 kDa in size corresponding to PARP-1 by western blotting in the appropriate cell lysate or extract.

Restrictions: For Research Use only

Handling

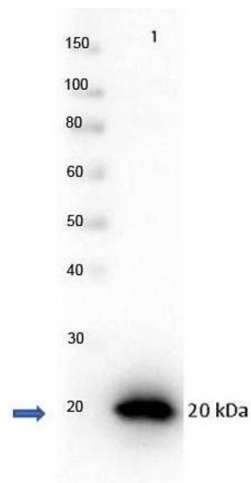
Format:	Liquid
Concentration:	1.0 mg/mL
Buffer:	Buffer: 0.02 M Potassium Phosphate, 0.15 M Sodium Chloride, pH 7.2 Stabilizer: 10 % (v/v) Glycerol
Preservative:	Sodium azide
Precaution of Use:	This product contains Sodium azide: a POISONOUS AND HAZARDOUS SUBSTANCE which should be handled by trained staff only.
Storage:	-20 °C
Storage Comment:	Store vial at -20° C prior to opening. Aliquot contents and freeze at -20° C or below for extended storage. Avoid cycles of freezing and thawing. Centrifuge product if not completely clear after standing at room temperature. This product is stable 2 - 3 weeks at 4°C as an undiluted liquid. Dilute only prior to immediate use.
Expiry Date:	12 months

Images



SDS-PAGE

Image 1. SDS-PAGE of PARP1 (internal) Control Protein. Lane 1: Non-Reduced PARP (internal) Control Protein. M: 3 μ L Opal Prestained Marker (MB-210-0500). Lane 2: Reduced PARP1 (internal) Control Protein. Load: 1 μ g per lane. Predicted/Observed size: 20 kDa.



Western Blotting

Image 2. Western Blot of Rabbit anti-PARP1-AD with protein Western Blot of recombinant PARP1 with Rabbit anti-PARP1 (internal) antibody. Lane 1: PARP1-autocatalytic domain recombinant protein. Load: 0.05 µg per lane. Primary antibody: PARP1 (internal) antibody at 1 µg/mL for overnight at 4°C. Secondary antibody: HRP Gt-a-rabbit secondary antibody at 1:40,000 for 30 min at RT. Block: ABIN925618 overnight at 4°C. Predicted/Observed size: ~19 kDa for rPARP1 (internal) Other band(s): none.