

Datasheet for ABIN562501
anti-PSPH antibody (AA 1-225)



[Go to Product page](#)

4 Images

Overview

Quantity:	100 µg
Target:	PSPH
Binding Specificity:	AA 1-225
Reactivity:	Human
Host:	Mouse
Clonality:	Monoclonal
Conjugate:	This PSPH antibody is un-conjugated
Application:	Western Blotting (WB), ELISA

Product Details

Purpose:	Mouse monoclonal antibody raised against a full length recombinant PSPH.
Immunogen:	PSPH (AAH63614, 1 a.a. ~ 225 a.a) full-length recombinant protein with GST tag. MW of the GST tag alone is 26 KDa.
Sequence:	MVSHSELRKL FYSADAVCFD VDSTVIREEG IDELAKICGV EDAVSEMTRR AMGGAVPFKA ALTERLALIQ PSREQVQRLLI AEQPPHLTPG IRELVSRLLQE RNVQVFLISG GFRSIVEHVA SKLNIPATNV FANRLKFYFN GEYAGFDETQ PTAESGGK GK VIKLLKEKFH FKKIIMIGDG ATDMEACPPA DAFIGFGGNV IRQQVKDNAK WYITDFVELL GELEE
Clone:	2G9
Isotype:	IgG1
Cross-Reactivity:	Human

Product Details

Characteristics: Antibody Reactive Against Recombinant Protein.

Target Details

Target: PSPH

Alternative Name: PSPH ([PSPH Products](#))

Background: Full Gene Name: phosphoserine phosphatase
Synonyms: PSP

Gene ID: 5723

Pathways: [Warburg Effect](#)

Application Details

Application Notes: Optimal working dilution should be determined by the investigator.

Restrictions: For Research Use only

Handling

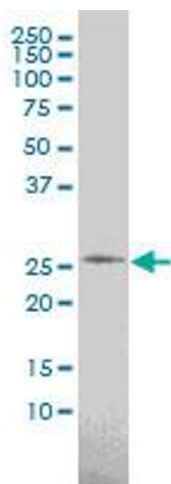
Buffer: In 1x PBS, pH 7.4

Handling Advice: Aliquot to avoid repeated freezing and thawing.

Storage: -20 °C

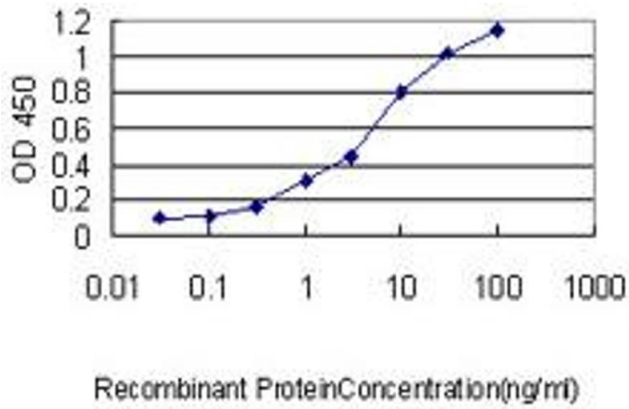
Storage Comment: Store at -20°C or lower. Aliquot to avoid repeated freezing and thawing.

Images



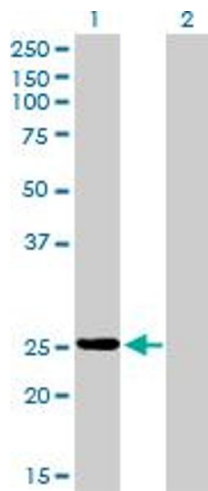
Western Blotting

Image 1. PSPH monoclonal antibody (M02), clone 2G9 Western Blot analysis of PSPH expression in K-562 .



ELISA

Image 2. Detection limit for recombinant GST tagged PSPH is approximately 0.1 ng/ml as a capture antibody.



Western Blotting

Image 3. Western Blot analysis of PSPH expression in transfected 293T cell line by PSPH monoclonal antibody (M02), clone 2G9.

Lane 1: PSPH transfected lysate(25 kDa).

Lane 2: Non-transfected lysate.

Please check the [product details page](#) for more images. Overall 4 images are available for ABIN562501.