



[Go to Product page](#)

Datasheet for ABIN562503

anti-Patched 1 antibody (AA 841-940)

1 Image

Overview

Quantity:	50 µL
Target:	Patched 1 (PTCH1)
Binding Specificity:	AA 841-940
Reactivity:	Human
Host:	Mouse
Clonality:	Polyclonal
Conjugate:	This Patched 1 antibody is un-conjugated
Application:	Western Blotting (WB), ELISA

Product Details

Purpose:	Mouse polyclonal antibody raised against a partial recombinant PTCH.
Immunogen:	PTCH (NP_000255, 841 a.a. ~ 940 a.a) partial recombinant protein with GST tag.
Sequence:	PKMWLHYFRD WLQGLQDAFD SDWETGKIMP NNYKNGSDDG VLAYKLLVQT GSRDKPIDIS QLTKQRLVDA DGIINPSAFY IYLTAWVSND PVAYAASQAN
Cross-Reactivity:	Human
Characteristics:	Antibody Reactive Against Recombinant Protein.

Target Details

Target:	Patched 1 (PTCH1)
Alternative Name:	PTCH1 (PTCH1 Products)

Target Details

Background:	Full Gene Name: patched homolog 1 (Drosophila) Synonyms: BCNS,FLJ26746,FLJ42602,HPE7,NBCCS,PTC,PTC1,PTCH,PTCH11
Gene ID:	5727
NCBI Accession:	NM_000264
Pathways:	Hedgehog Signaling , Carbohydrate Homeostasis , Tube Formation

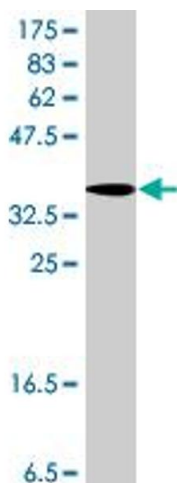
Application Details

Application Notes:	Optimal working dilution should be determined by the investigator.
Restrictions:	For Research Use only

Handling

Format:	Liquid
Buffer:	50 % glycerol
Handling Advice:	Aliquot to avoid repeated freezing and thawing.
Storage:	-20 °C
Storage Comment:	Store at -20°C or lower. Aliquot to avoid repeated freezing and thawing.

Images



Western Blotting

Image 1. Western Blot detection against Immunogen (37.11 kDa).