



[Go to Product page](#)

Datasheet for ABIN562513
anti-PTGIS antibody (AA 391-500)

2 Images

1 Publication

Overview

Quantity:	50 µL
Target:	PTGIS
Binding Specificity:	AA 391-500
Reactivity:	Human
Host:	Mouse
Clonality:	Polyclonal
Conjugate:	This PTGIS antibody is un-conjugated
Application:	Western Blotting (WB), ELISA

Product Details

Purpose:	Mouse polyclonal antibody raised against a partial recombinant PTGIS.
Immunogen:	PTGIS (NP_000952, 391 a.a. ~ 500 a.a) partial recombinant protein with GST tag.
Sequence:	PQRDPEIYTD PEVFKYNRFL NPDGSEKKDF YKDGKRLKNY NMPWGAGHNNH CLGRSYAVNS IKQFVFLVLV HLDLELINAD VEIPEFDLSR YGFGLMQPEH DVPVRYRIRP
Cross-Reactivity:	Human, Mouse
Characteristics:	Antibody Reactive Against Recombinant Protein.

Target Details

Target:	PTGIS
Alternative Name:	PTGIS (PTGIS Products)

Target Details

Background:	Full Gene Name: prostaglandin I2 (prostacyclin) synthase Synonyms: CYP8,CYP8A1,MGC126858,MGC126860,PGIS,PTGI
Gene ID:	5740
NCBI Accession:	NM_000961

Application Details

Application Notes:	Optimal working dilution should be determined by the investigator.
Restrictions:	For Research Use only

Handling

Format:	Liquid
Buffer:	50 % glycerol
Handling Advice:	Aliquot to avoid repeated freezing and thawing.
Storage:	-20 °C
Storage Comment:	Store at -20°C or lower. Aliquot to avoid repeated freezing and thawing.

Publications

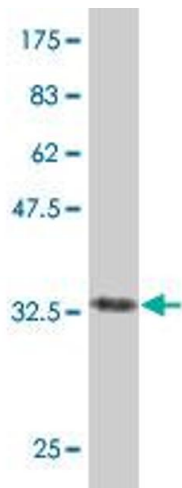
Product cited in:	Gurgul-Convey, Hanzelka, Lenzen: "Mechanism of prostacyclin-induced potentiation of glucose-induced insulin secretion." in: Endocrinology , Vol. 153, Issue 6, pp. 2612-22, (2012) (PubMed).
-------------------	---

Images



Western Blotting

Image 1. PTGIS polyclonal antibody (A01), Lot # 050921JC01 Western Blot analysis of PTGIS expression in NIH/3T3 .



Western Blotting

Image 2. Western Blot detection against Immunogen (38.21 kDa).