



[Go to Product page](#)

Datasheet for ABIN562517

## anti-PTH1R antibody (AA 27-134)

### 3 Images

#### Overview

Quantity:	50 µL
Target:	PTH1R
Binding Specificity:	AA 27-134
Reactivity:	Human
Host:	Mouse
Clonality:	Polyclonal
Conjugate:	This PTH1R antibody is un-conjugated
Application:	Western Blotting (WB), ELISA

#### Product Details

Purpose:	Mouse polyclonal antibody raised against a partial recombinant PTHR1.
Immunogen:	PTH1R (NP_000307, 27 a.a. ~ 134 a.a) partial recombinant protein with GST tag.
Sequence:	DADDVMTKEE QIFLLHRAQA QCEKRLKEVL QRPASIMESD KGWTSASTSG KPRKDKASGK LYPESEEDKE APTGSRYSRGR PCLPEWDHIL CWPLGAPGEV VAVPCPDY
Cross-Reactivity:	Human
Characteristics:	Antibody Reactive Against Recombinant Protein.

#### Target Details

Target:	PTH1R
Alternative Name:	PTH1R ( <a href="#">PTH1R Products</a> )

## Target Details

Background:	Full Gene Name: parathyroid hormone 1 receptor Synonyms: MGC138426,MGC138452,PTH1R,PTH1R1
Gene ID:	5745
NCBI Accession:	<a href="#">NM_000316</a>
Pathways:	<a href="#">Regulation of Carbohydrate Metabolic Process</a>

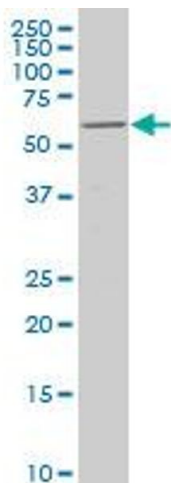
## Application Details

Application Notes:	Optimal working dilution should be determined by the investigator.
Restrictions:	For Research Use only

## Handling

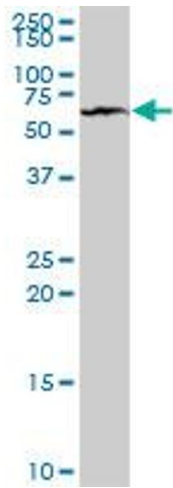
Format:	Liquid
Buffer:	50 % glycerol
Handling Advice:	Aliquot to avoid repeated freezing and thawing.
Storage:	-20 °C
Storage Comment:	Store at -20°C or lower. Aliquot to avoid repeated freezing and thawing.

## Images



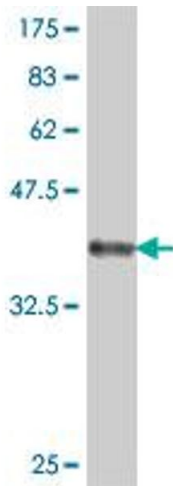
### Western Blotting

**Image 1.** PTHR1 polyclonal antibody (A02), Lot # 051207JC01 Western Blot analysis of PTHR1 expression in MCF-7 .



### Western Blotting

**Image 2.** PTHR1 polyclonal antibody (A02), Lot # 060807QCS1. Western Blot analysis of PTHR1 expression in HeLa.



### Western Blotting

**Image 3.** Western Blot detection against Immunogen (37.99 kDa).