



[Go to Product page](#)

Datasheet for ABIN562533

## anti-PTPRF antibody (AA 1788-1897)

### 1 Image

#### Overview

Quantity:	50 µL
Target:	PTPRF
Binding Specificity:	AA 1788-1897
Reactivity:	Human
Host:	Mouse
Clonality:	Polyclonal
Conjugate:	This PTPRF antibody is un-conjugated
Application:	Western Blotting (WB), ELISA

#### Product Details

Purpose:	Mouse polyclonal antibody raised against a partial recombinant PTPRF.
Immunogen:	PTPRF (NP_002831, 1788 a.a. ~ 1897 a.a) partial recombinant protein with GST tag.
Sequence:	FQFTDWPEQG VPKTGEGFID FIGQVHKTK E QFGQDGPITV HCSAGVGRTG VFITLSIVLE RMRYEGVVDM FQTVKTLRTQ RPAMVQTEDQ YQLCYRAALE YLGSFDHYAT
Cross-Reactivity:	Human
Characteristics:	Antibody Reactive Against Recombinant Protein.

#### Target Details

Target:	PTPRF
Alternative Name:	PTPRF ( <a href="#">PTPRF Products</a> )

## Target Details

Background:	Full Gene Name: protein tyrosine phosphatase, receptor type, F Synonyms: FLJ43335,FLJ45062,FLJ45567,LAR
Gene ID:	5792
NCBI Accession:	<a href="#">NM_002840</a>
Pathways:	<a href="#">EGFR Signaling Pathway</a>

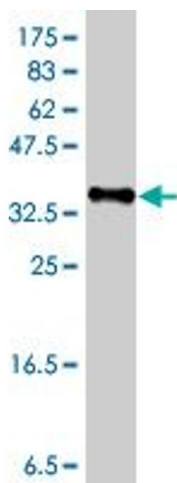
## Application Details

Application Notes:	Optimal working dilution should be determined by the investigator.
Restrictions:	For Research Use only

## Handling

Format:	Liquid
Buffer:	50 % glycerol
Handling Advice:	Aliquot to avoid repeated freezing and thawing.
Storage:	-20 °C
Storage Comment:	Store at -20°C or lower. Aliquot to avoid repeated freezing and thawing.

## Images



### Western Blotting

**Image 1.** Western Blot detection against Immunogen (38.21 kDa).