



[Go to Product page](#)

Datasheet for ABIN562544
anti-PVRL1 antibody (AA 33-142)

1 Image

Overview

| | |
|----------------------|--------------------------------------|
| Quantity: | 50 µL |
| Target: | PVRL1 |
| Binding Specificity: | AA 33-142 |
| Reactivity: | Human |
| Host: | Mouse |
| Clonality: | Polyclonal |
| Conjugate: | This PVRL1 antibody is un-conjugated |
| Application: | Western Blotting (WB), ELISA |

Product Details

| | |
|-------------------|---|
| Purpose: | Mouse polyclonal antibody raised against a partial recombinant PVRL1. |
| Immunogen: | PVRL1 (NP_002846, 33 a.a. ~ 142 a.a) partial recombinant protein with GST tag. |
| Sequence: | VQVNDSMYGF IGTDVVLHCS FANPLPSVKI TQVTWQKSTN GSKQNVAIYN PSMGVSVLAP YRERVEFLRP SFTDGTIRLS RLELEDEGVY ICEFATFPTG NRESQLNLTV |
| Cross-Reactivity: | Human |
| Characteristics: | Antibody Reactive Against Recombinant Protein. |

Target Details

| | |
|-------------------|--|
| Target: | PVRL1 |
| Alternative Name: | PVRL1 (PVRL1 Products) |

Target Details

| | |
|-----------------|--|
| Background: | Full Gene Name: poliovirus receptor-related 1 (herpesvirus entry mediator C) Synonyms: CD111,CLPED1,ED4,HIgR,HVEC,MGC142031,MGC16207,OFC7,PRR,PRR1,PVRR,PVRR1,SK-12,nectin-1 |
| Gene ID: | 5818 |
| NCBI Accession: | NM_002855 |
| Pathways: | Cell-Cell Junction Organization |

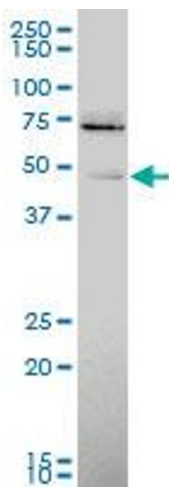
Application Details

| | |
|--------------------|--|
| Application Notes: | Optimal working dilution should be determined by the investigator. |
| Restrictions: | For Research Use only |

Handling

| | |
|------------------|--|
| Format: | Liquid |
| Buffer: | 50 % glycerol |
| Handling Advice: | Aliquot to avoid repeated freezing and thawing. |
| Storage: | -20 °C |
| Storage Comment: | Store at -20°C or lower. Aliquot to avoid repeated freezing and thawing. |

Images



Western Blotting

Image 1. PVRL1 polyclonal antibody (A01), Lot # 050913JC01 Western Blot analysis of PVRL1 expression in A-431 .